

# eEF2 Rabbit pAb

Catalog No.: A2068 **1 Publications**

## Basic Information

### Observed MW

107kDa

### Calculated MW

95kDa

### Category

Primary antibody

### Applications

ELISA, WB

### Cross-Reactivity

Human

## Background

This gene encodes a member of the GTP-binding translation elongation factor family. This protein is an essential factor for protein synthesis. It promotes the GTP-dependent translocation of the nascent protein chain from the A-site to the P-site of the ribosome. This protein is completely inactivated by EF-2 kinase phosphorylation.

## Recommended Dilutions

WB 1:500 - 1:2000

## Immunogen Information

### Gene ID

1938

### Swiss Prot

P13639

### Immunogen

Recombinant fusion protein containing a sequence corresponding to amino acids 1-290 of human eEF2 (NP\_001952.1).

### Synonyms

EF2; EF-2; EEF-2; SCA26; eEF2

## Contact

 | 400-999-6126

 | [cn.market@abclonal.com.cn](mailto:cn.market@abclonal.com.cn)

 | [www.abclonal.com.cn](http://www.abclonal.com.cn)

## Product Information

### Source

Rabbit

### Isotype

IgG

### Purification

Affinity purification

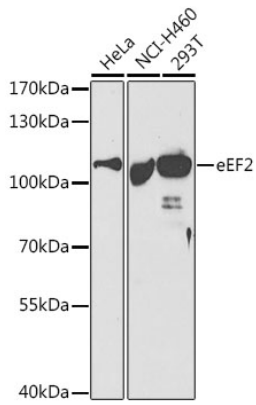
### Storage

Store at -20°C. Avoid freeze / thaw cycles.

Buffer: PBS with 0.02% sodium azide, 50% glycerol, pH7.3.

## Validation Data

---



Western blot analysis of extracts of various cell lines, using eEF2 antibody (A2068) at 1:500 dilution.  
Secondary antibody: HRP Goat Anti-Rabbit IgG (H+L) (AS014) at 1:10000 dilution.  
Lysates/proteins: 25µg per lane.  
Blocking buffer: 3% nonfat dry milk in TBST.