

EV71 3C Rabbit pAb

Catalog No.: A20687 **2 Publications**

Basic Information

Observed MW

20kDa

Calculated MW

Category

Primary antibody

Applications

ELISA, WB

Cross-Reactivity

Other (Wide Range Predicted)

Background

Enterovirus 71 (EV71) is the main pathogen of the hand, foot, and mouth disease. It was firstly isolated from sputum specimens of infants with central nervous system diseases in California in 1969, and has been repeatedly reported in various parts of the world, especially in the Asia-Pacific region. Infection with EV71 can lead to severe neurological complications such as encephalitis, acute flaccid paralysis, and pulmonary edema in children (1). EV71 belongs to the genus Enterovirus within the Picornaviridae family, which is a non-enveloped virus with a single positive-stranded RNA genome. EV71 3C protein is a 183 amino acid cysteine protease that can cleave most structural and non-structural proteins of EV71. Based on the analysis and understanding of EV71 3C protease, it is helpful to study and treat diseases caused by EV71 virus infection. The EV71 3C protease promotes virus replication by cleaving EV71 synthesis or host proteins. Moreover, EV71 3C protease inhibits the innate immune system and causes apoptosis.

Recommended Dilutions

WB 1:500 - 1:1000

Immunogen Information

Gene ID

Swiss Prot

Immunogen

Recombinant fusion protein containing a sequence corresponding to amino acids 1-183 of human EV71 3C. (B9VUU3).

Synonyms

Contact

☎ | 400-999-6126

✉ | cn.market@abclonal.com.cn

🌐 | www.abclonal.com.cn

Product Information

Source

Rabbit

Isotype

IgG

Purification

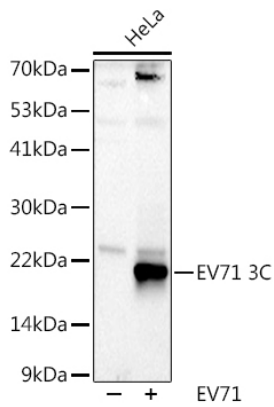
Affinity purification

Storage

Store at -20°C. Avoid freeze / thaw cycles.

Buffer: PBS with 0.01% thimerosal, 50% glycerol, pH 7.3.

Validation Data



Western blot analysis of lysates from HeLa cells, using EV71 3C Rabbit pAb (A20687) at 1:1000 dilution.
Secondary antibody: HRP Goat Anti-Rabbit IgG (H+L) (AS014) at 1:10000 dilution.
Lysates/proteins: 25µg per lane.
Blocking buffer: 3% nonfat dry milk in TBST.
Detection: ECL Basic Kit (RM00020).
Exposure time: 90s.