

SDG724 Rabbit pAb

Catalog No.: A20704

Basic Information

Observed MW

70kDa

Calculated MW

45kDa

Category

Primary antibody

Applications

WB, ELISA

Cross-Reactivity

Oryza sativa

Background

The Histone Methyltransferase SDG724 Mediates H3K36me2/3 Deposition at MADS50 and RFT1 and Promotes Flowering in Rice.

Recommended Dilutions

WB 1:500 - 1:2000

ELISA Recommended starting concentration is 1 µg/mL. Please optimize the concentration based on your specific assay requirements.

Immunogen Information

Gene ID

4346677

Swiss Prot

Immunogen

Recombinant protein (or fragment). This information is considered to be commercially sensitive.

Synonyms

SDG724; lvp1; OsSET34

Contact

 | 400-999-6126

 | cn.market@abclonal.com.cn

 | www.abclonal.com.cn

Product Information

Source

Rabbit

Isotype

IgG

Purification

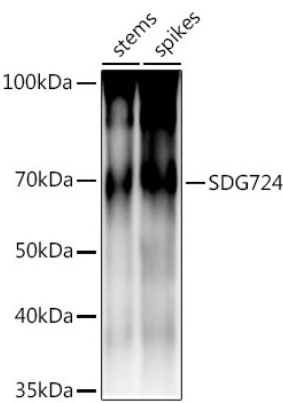
Affinity purification

Storage

Store at -20°C. Avoid freeze / thaw cycles.

Buffer: PBS with 0.05% proclin300, 50% glycerol, pH7.3.

Validation Data



Western blot analysis of extracts of various tissues from the japonica rice (*Oryza sativa* L.) variety Zhonghua 11, using SDG724 Rabbit pAb (A20704) at 1:1000 dilution. Secondary antibody: HRP-conjugated Goat anti-Rabbit IgG (H+L) (AS014) at 1:10000 dilution. Lysates/proteins: 25µg per lane. Blocking buffer: 3% nonfat dry milk in TBST. Detection: ECL Basic Kit (RM00020). Exposure time: 10s.