

# Cold1 Rabbit pAb

Catalog No.: A20713

## Basic Information

### Observed MW

53kDa

### Calculated MW

53kDa

### Category

Primary antibody

### Applications

ELISA, WB

### Cross-Reactivity

Oryza sativa

## Background

Involved in chilling tolerance. Interacts with the G-protein alpha subunit GPA1 to activate the calcium channel for sensing low temperature and to accelerate G-protein GTPase activity.

## Recommended Dilutions

WB 1:500 - 1:2000

## Immunogen Information

### Gene ID

4336878

### Swiss Prot

Q7X7S8

### Immunogen

Recombinant fusion protein containing a sequence corresponding to amino acids 90-260 of Oryza sativa Cold1. (Q7X7S8).

### Synonyms

COLD1; Osj\_16035; Cold1

## Contact

 | 400-999-6126

 | [cn.market@abclonal.com.cn](mailto:cn.market@abclonal.com.cn)

 | [www.abclonal.com.cn](http://www.abclonal.com.cn)

## Product Information

### Source

Rabbit

### Isotype

IgG

### Purification

Affinity purification

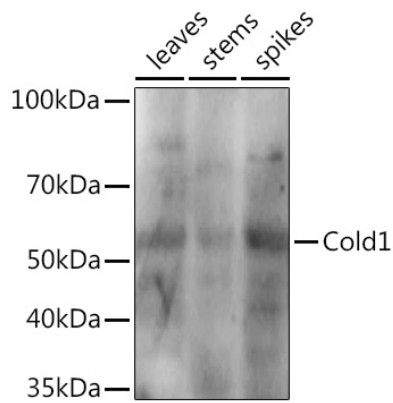
### Storage

Store at -20°C. Avoid freeze / thaw cycles.

Buffer: PBS with 0.05% proclin300, 50% glycerol, pH7.3.

## Validation Data

---



Western blot analysis of extracts of various tissues from the japonica rice (*Oryza sativa* L.) variety Zhonghua 11, using Cold1 Rabbit pAb (A20713) at 1:1000 dilution.  
Secondary antibody: HRP Goat Anti-Rabbit IgG (H+L) (AS014) at 1:10000 dilution.  
Lysates/proteins: 25µg per lane.  
Blocking buffer: 3% nonfat dry milk in TBST.  
Detection: ECL Enhanced Kit (RM00021).  
Exposure time: 10s.