

IL10 Rabbit pAb

Catalog No.: A20723

Basic Information

Observed MW

18kDa/21kDa

Calculated MW

21kDa

Category

Primary antibody

Applications

ELISA, WB

Cross-Reactivity

Mouse

Background

This gene encodes an anti-inflammatory cytokine that is a member of the class-2 cytokine family. The encoded protein is secreted by cells of both the innate and adaptive immune systems and is crucial for limiting the immune response to a broad range of pathogens. It also has been shown to suppress autoimmune responses. This protein mediates its immunosuppressive signal through a specific interleukin 10 receptor complex. Aberrant functioning of this gene is associated with numerous immune disorders including graft-versus-host disease, and increased susceptibility to HIV-1 infection and rheumatoid arthritis.

Recommended Dilutions

WB 1:1000 - 1:5000

Immunogen Information

Gene ID

16153

Swiss Prot

P18893

Immunogen

Recombinant fusion protein containing a sequence corresponding to amino acids 19-178 of mouse IL10 (NP_034678.1).

Synonyms

CSIF; If2a; Il-10; IL10

Contact

 | 400-999-6126

 | cn.market@abclonal.com.cn

 | www.abclonal.com.cn

Product Information

Source

Rabbit

Isotype

IgG

Purification

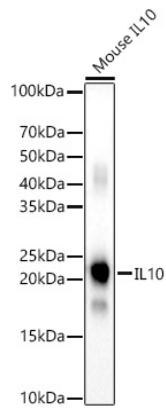
Affinity purification

Storage

Store at -20°C. Avoid freeze / thaw cycles.

Buffer: PBS with 0.05% proclin300, 50% glycerol, pH7.3.

Validation Data



Western blot analysis of various lysates, using IL10 Rabbit pAb (A20723) at 1:2000 dilution.
Secondary antibody: HRP Goat Anti-Rabbit IgG (H+L) (AS014) at 1:10000 dilution.
Lysates/proteins: 25µg per lane.
Blocking buffer: 3% nonfat dry milk in TBST.
Detection: ECL Basic Kit (RM00020).
Exposure time: 10s.