

LMBRD2 Rabbit pAb

Catalog No.: A20757

Basic Information

Observed MW

81kDa

Calculated MW

81kDa

Category

Primary antibody

Applications

ELISA, WB

Cross-Reactivity

Mouse

Background

Involved in adrenergic receptor signaling pathway. Located in membrane.

Recommended Dilutions

WB 1:500 - 1:1000

Immunogen Information

Gene ID

92255

Swiss Prot

Q68DH5

Immunogen

Recombinant fusion protein containing a sequence corresponding to amino acids 210-390 of human LMBRD2 (NP_001007528.1).

Synonyms

DENBA; LMBRD2

Contact

☎ | 400-999-6126

✉ | cn.market@abclonal.com.cn

🌐 | www.abclonal.com.cn

Product Information

Source

Rabbit

Isotype

IgG

Purification

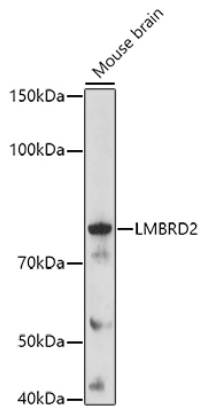
Affinity purification

Storage

Store at -20°C. Avoid freeze / thaw cycles.

Buffer: PBS with 0.01% thimerosal, 50% glycerol, pH7.3.

Validation Data



Western blot analysis of lysates from Mouse brain, using LMBRD2 Rabbit pAb (A20757) at 1:1000 dilution.
Secondary antibody: HRP Goat Anti-Rabbit IgG (H+L) (AS014) at 1:10000 dilution.
Lysates/proteins: 25µg per lane.
Blocking buffer: 3% nonfat dry milk in TBST.
Detection: ECL Basic Kit (RM00020).
Exposure time: 90s.