

# SPARCL1 Rabbit pAb

Catalog No.: A20768

## Basic Information

### Observed MW

140kDa

### Calculated MW

75kDa

### Category

Primary antibody

### Applications

ELISA, WB

### Cross-Reactivity

Human, Mouse, Rat

## Background

Predicted to enable calcium ion binding activity; collagen binding activity; and extracellular matrix binding activity. Predicted to be involved in anatomical structure development and regulation of synapse organization. Located in extracellular space.

## Recommended Dilutions

WB 1:500 - 1:1000

## Immunogen Information

### Gene ID

8404

### Swiss Prot

Q14515

### Immunogen

Recombinant fusion protein containing a sequence corresponding to amino acids 17-300 of human SPARCL1 (NP\_004675.3).

### Synonyms

SC1; MAST9; PIG33; MAST 9; SPARCL1

## Contact

☎ | 400-999-6126

✉ | [cn.market@abclonal.com.cn](mailto:cn.market@abclonal.com.cn)

🌐 | [www.abclonal.com.cn](http://www.abclonal.com.cn)

## Product Information

### Source

Rabbit

### Isotype

IgG

### Purification

Affinity purification

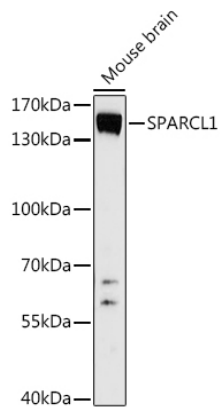
### Storage

Store at -20°C. Avoid freeze / thaw cycles.

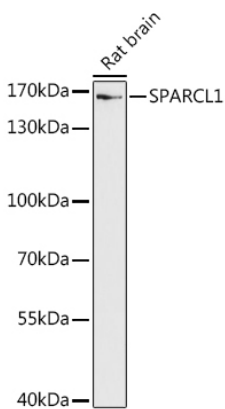
Buffer: PBS with 0.01% thimerosal, 50% glycerol, pH7.3.

## Validation Data

---



Western blot analysis of lysates from Mouse brain, using SPARCL1 Rabbit pAb (A20768) at 1:1000 dilution.  
Secondary antibody: HRP Goat Anti-Rabbit IgG (H+L) (AS014) at 1:10000 dilution.  
Lysates/proteins: 25µg per lane.  
Blocking buffer: 3% nonfat dry milk in TBST.  
Detection: ECL Basic Kit (RM00020).  
Exposure time: 90s.



Western blot analysis of lysates from Rat brain, using SPARCL1 Rabbit pAb (A20768) at 1:1000 dilution.  
Secondary antibody: HRP Goat Anti-Rabbit IgG (H+L) (AS014) at 1:10000 dilution.  
Lysates/proteins: 25µg per lane.  
Blocking buffer: 3% nonfat dry milk in TBST.  
Detection: ECL Enhanced Kit (RM00021).  
Exposure time: 90s.