

Bcl-2 Mouse mAb

Catalog No.: A20777 **12 Publications**

Basic Information

Observed MW

26 kDa

Calculated MW

26 kDa

Category

Primary antibody

Applications

WB, IF/ICC, ELISA

Cross-Reactivity

Human, Mouse, Rat

CloneNo number

AMC0441

Background

This gene encodes an integral outer mitochondrial membrane protein that blocks the apoptotic death of some cells such as lymphocytes. Constitutive expression of BCL2, such as in the case of translocation of BCL2 to Ig heavy chain locus, is thought to be the cause of follicular lymphoma. Alternative splicing results in multiple transcript variants.

Recommended Dilutions

WB 1:1000 - 1:3000

IF/ICC 1:50 - 1:200

ELISA Recommended starting concentration is 1 µg/mL. Please optimize the concentration based on your specific assay requirements.

Immunogen Information

Gene ID

596

Swiss Prot

P10415

Immunogen

Recombinant protein (or fragment). This information is considered to be commercially sensitive.

Synonyms

Bcl-2; PPP1R50

Contact

☎ | 400-999-6126

✉ | cn.market@abclonal.com.cn

🌐 | www.abclonal.com.cn

Product Information

Source

Mouse

Isotype

IgG1, Kappa

Purification

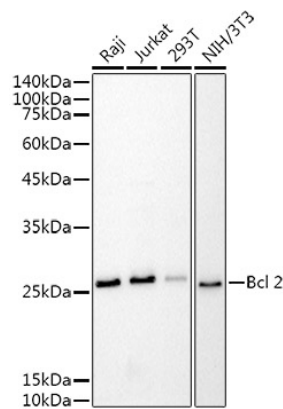
Affinity purification

Storage

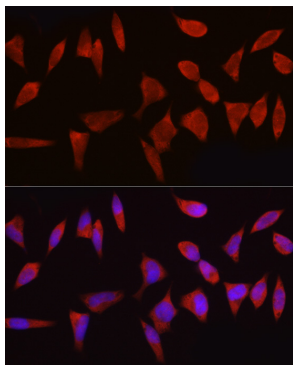
Store at -20°C. Avoid freeze / thaw cycles.

Buffer: PBS containing 50% glycerol, preserved with proclin300 or sodium azide (as specified on the Certificate of Analysis), pH 7.3.

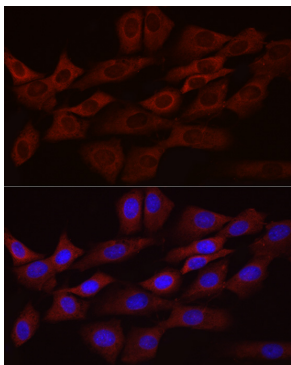
Validation Data



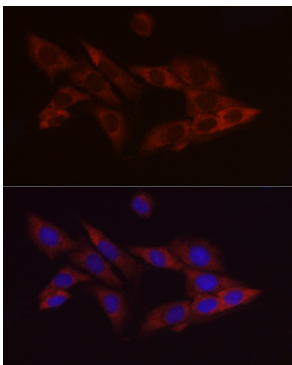
Western blot analysis of various lysates using Bcl-2 Mouse mAb (A20777) at 1:1000 dilution. Secondary antibody: HRP-conjugated Goat anti-Mouse IgG (H+L) (AS003) at 1:10000 dilution. Lysates/proteins: 25µg per lane. Blocking buffer: 3% nonfat dry milk in TBST. Detection: ECL Basic Kit (RM00020). Exposure time: 10s.



Immunofluorescence analysis of HeLa cells using Bcl-2 Mouse mAb (A20777) at a dilution of 1:100 (40x lens). Secondary antibody: Cy3-conjugated Goat anti-Mouse IgG (H+L) (AS008) at 1:500 dilution. Blue: DAPI for nuclear staining.



Immunofluorescence analysis of NIH/3T3 cells using Bcl-2 Mouse mAb (A20777) at a dilution of 1:100 (40x lens). Secondary antibody: Cy3-conjugated Goat anti-Mouse IgG (H+L) (AS008) at 1:500 dilution. Blue: DAPI for nuclear staining.



Immunofluorescence analysis of PC-12 cells using Bcl-2 Mouse mAb (A20777) at a dilution of 1:100 (40x lens). Secondary antibody: Cy3-conjugated Goat anti-Mouse IgG (H+L) (AS008) at 1:500 dilution. Blue: DAPI for nuclear staining.