

CD68 Rabbit mAb

Catalog No.: A20803

Recombinant

11 Publications

Basic Information

Observed MW

80-130kDa

Calculated MW

37kDa

Category

Primary antibody

Applications

WB, IF-P, FC (intra), ELISA

Cross-Reactivity

Human, Mouse, Rat

CloneNo number

ARC51150

Background

This gene encodes a 110-kD transmembrane glycoprotein that is highly expressed by human monocytes and tissue macrophages. It is a member of the lysosomal/endosomal-associated membrane glycoprotein (LAMP) family. The protein primarily localizes to lysosomes and endosomes with a smaller fraction circulating to the cell surface. It is a type I integral membrane protein with a heavily glycosylated extracellular domain and binds to tissue- and organ-specific lectins or selectins. The protein is also a member of the scavenger receptor family. Scavenger receptors typically function to clear cellular debris, promote phagocytosis, and mediate the recruitment and activation of macrophages. Alternative splicing results in multiple transcripts encoding different isoforms.

Recommended Dilutions

WB 1:500 - 1:1000**IF-P** 1:50 - 1:200**FC (intra)** 1:50 - 1:200

ELISA Recommended starting concentration is 1 µg/mL. Please optimize the concentration based on your specific assay requirements.

Immunogen Information

Gene ID

968

Swiss Prot

P34810

Immunogen

Synthetic peptide. This information is considered to be commercially sensitive.

Synonyms

GP110; LAMP4; SCARD1; CD68

Contact

 | 400-999-6126 | cn.market@abclonal.com.cn | www.abclonal.com.cn

Product Information

Source

Rabbit

Isotype

IgG

Purification

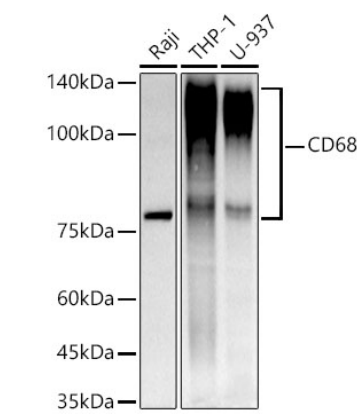
Affinity purification

Storage

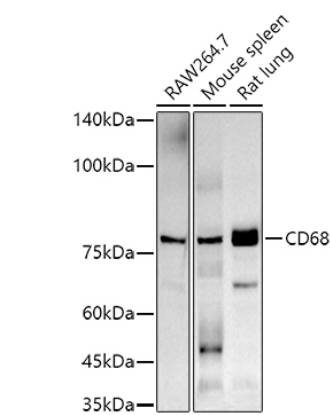
Store at -20°C. Avoid freeze / thaw cycles.

Buffer: PBS containing 50% glycerol and 0.05% BSA, preserved with proclin300 or sodium azide (as specified on the Certificate of Analysis), pH 7.3.

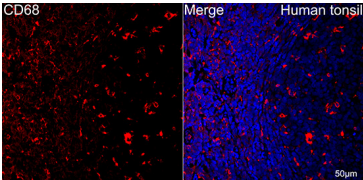
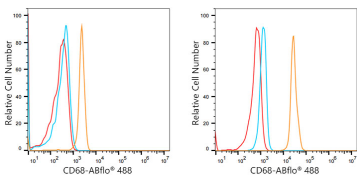
Validation Data



Western blot analysis of various lysates using CD68 Rabbit mAb (A20803) at 1:1000 dilution. Secondary antibody: HRP-conjugated Goat anti-Rabbit IgG (H+L) (AS014) at 1:10000 dilution. Lysates/proteins: 25µg per lane. Blocking buffer: 3% nonfat dry milk in TBST. Detection: ECL Basic Kit (RM00020). Exposure time: 30s.



Western blot analysis of various lysates using CD68 Rabbit mAb (A20803) at 1:1000 dilution. Secondary antibody: HRP-conjugated Goat anti-Rabbit IgG (H+L) (AS014) at 1:10000 dilution. Lysates/proteins: 25µg per lane. Blocking buffer: 3% nonfat dry milk in TBST. Detection: ECL Basic Kit (RM00020). Exposure time: 90s.



Flow cytometry: 1×10^6 Jurkat cells (negative control, left) and U-87MG cells (right) were intracellularly-stained with CD68 Rabbit mAb (A20803, 2.5 µg/mL, orange line) or Rabbit IgG isotype control (AC042, 10 µg/mL, blue line), followed by FITC conjugated goat anti-rabbit pAb (1:200 dilution) staining. Non-fluorescently stained cells were used as blank control (red line).

Confocal imaging of paraffin-embedded Human tonsil tissue using CD68 Rabbit mAb (A20803, dilution 1:100) followed by a further incubation with Cy3 Goat Anti-Rabbit IgG (H+L) (AS007, dilution 1:500) (Red). DAPI was used for nuclear staining (Blue). Objective: 40x. Perform high pressure antigen retrieval with 0.01 M citrate buffer (pH 6.0) prior to IF staining.