

Timm22 Rabbit pAb

Catalog No.: A20813

Basic Information

Observed MW

20kDa

Calculated MW

20kDa

Category

Primary antibody

Applications

ELISA, WB, IP

Cross-Reactivity

Human, Mouse, Rat

Background

Predicted to enable mitochondrion targeting sequence binding activity and protein transmembrane transporter activity. Predicted to be involved in protein insertion into mitochondrial inner membrane. Predicted to act upstream of or within protein transport. Located in mitochondrion. Is expressed in several structures, including alimentary system; brain; cardiovascular system; egg cylinder; and genitourinary system. Human ortholog(s) of this gene implicated in combined oxidative phosphorylation deficiency 43. Orthologous to human TIMM22 (translocase of inner mitochondrial membrane 22).

Recommended Dilutions

WB 1:500 - 1:1000

IP 0.5µg-4µg antibody for
400µg-600µg extracts of
whole cells

Immunogen Information

Gene ID

56322

Swiss Prot

Q9CQ85

Immunogen

Recombinant fusion protein containing a sequence corresponding to amino acids 19-121 of mouse Timm22 (NP_062792.2).

Synonyms

Tim22; Timm22

Contact

☎ | 400-999-6126

✉ | cn.market@abclonal.com.cn

🌐 | www.abclonal.com.cn

Product Information

Source

Rabbit

Isotype

IgG

Purification

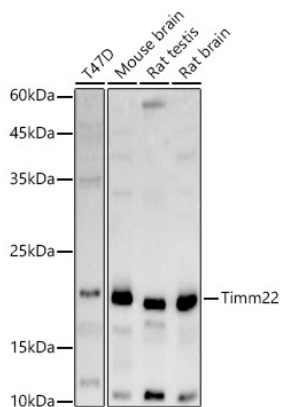
Affinity purification

Storage

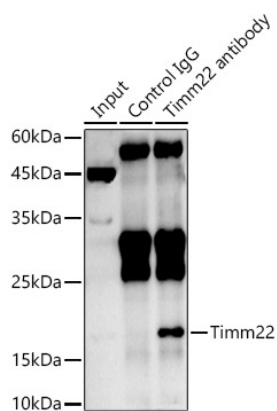
Store at -20°C. Avoid freeze / thaw cycles.

Buffer: PBS with 0.05% proclin300, 50% glycerol, pH7.3.

Validation Data



Western blot analysis of various lysates using Timm22 Rabbit pAb (A20813) at 1:1000 dilution. Secondary antibody: HRP Goat Anti-Rabbit IgG (H+L) (AS014) at 1:10000 dilution. Lysates/proteins: 25µg per lane. Blocking buffer: 3% nonfat dry milk in TBST. Detection: ECL Basic Kit (RM00020). Exposure time: 180s.



Immunoprecipitation analysis of 600 µg extracts of Rat brain cells using 3 µg Timm22 antibody (A20813). Western blot was performed from the immunoprecipitate using Timm22 antibody (A20813) at a dilution of 1:500.