

# TROP-2 Rabbit mAb

Catalog No.: A20824

Recombinant

1 Publications

## Basic Information

### Observed MW

40-65kDa

### Calculated MW

36kDa

### Category

Primary antibody

### Applications

WB,IHC-P,IF/ICC,ELISA

### Cross-Reactivity

Human, Mouse, Rat

### CloneNo number

ARC51513

## Background

This intronless gene encodes a carcinoma-associated antigen. This antigen is a cell surface receptor that transduces calcium signals. Mutations of this gene have been associated with gelatinous drop-like corneal dystrophy.

## Recommended Dilutions

**WB** 1:1000 - 1:2000

**IHC-P** 1:2000 - 1:10000

**IF/ICC** 1:100 - 1:800

**ELISA** Recommended starting concentration is 1 µg/mL. Please optimize the concentration based on your specific assay requirements.

## Immunogen Information

### Gene ID

4070

### Swiss Prot

P09758

### Immunogen

Recombinant fusion protein containing a sequence corresponding to amino acids 27-274 of human TROP-2 (NP\_002344.2).

### Synonyms

EGP1; GP50; M1S1; EGP-1; TROP2; GA7331; GA733-1; TROP-2

## Contact

☎ | 400-999-6126

✉ | [cn.market@abclonal.com.cn](mailto:cn.market@abclonal.com.cn)

🌐 | [www.abclonal.com.cn](http://www.abclonal.com.cn)

## Product Information

### Source

Rabbit

### Isotype

IgG

### Purification

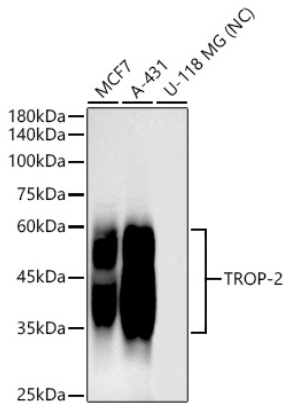
Affinity purification

### Storage

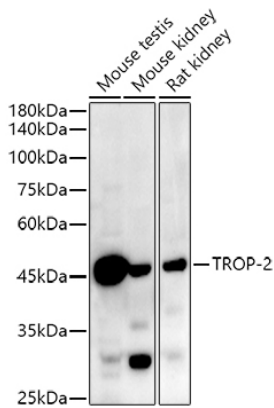
Store at -20°C. Avoid freeze / thaw cycles.

Buffer: PBS with 0.05% proclin300,0.05% BSA,50% glycerol,pH7.3.

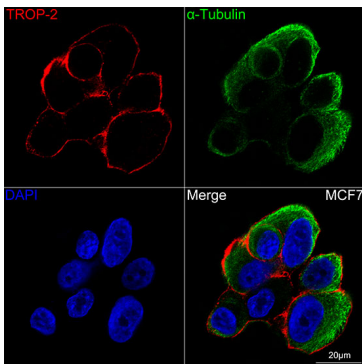
## Validation Data



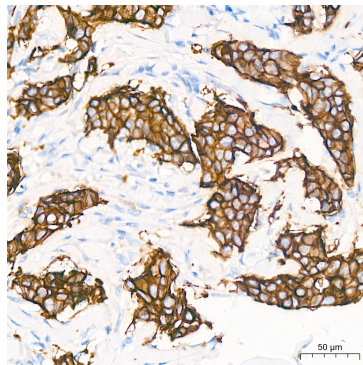
Western blot analysis of various lysates using TROP-2 Rabbit mAb (A20824) at 1:1000 dilution. Secondary antibody: HRP-conjugated Goat anti-Rabbit IgG (H+L) (AS014) at 1:10000 dilution. Lysates/proteins: 25µg per lane. Blocking buffer: 3% nonfat dry milk in TBST. Detection: ECL Basic Kit (RM00020). Exposure time: 60s.



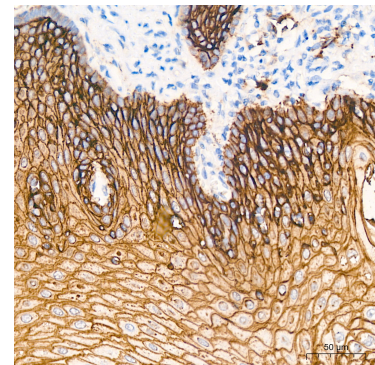
Western blot analysis of various lysates using TROP-2 Rabbit mAb (A20824) at 1:1000 dilution. Secondary antibody: HRP-conjugated Goat anti-Rabbit IgG (H+L) (AS014) at 1:10000 dilution. Lysates/proteins: 25µg per lane. Blocking buffer: 3% nonfat dry milk in TBST. Detection: ECL Enhanced Kit (RM00021). Exposure time: 60s.



Confocal imaging of MCF7 cells using TROP-2 Rabbit mAb (A20824, dilution 1:100) (Red). The cells were counterstained with  $\alpha$ -Tubulin Mouse mAb (AC012, dilution 1:400) (Green). DAPI was used for nuclear staining (blue). Objective: 100x.

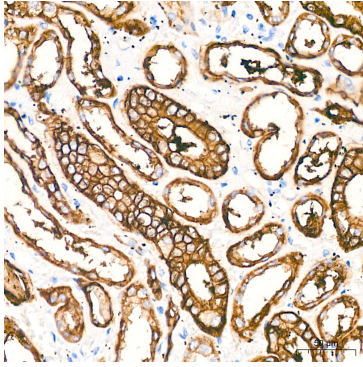


Immunohistochemistry analysis of paraffin-embedded Human breast cancer tissue using TROP-2 Rabbit mAb (A20824) at a dilution of 1:8000 (40x lens). High pressure antigen retrieval performed with 0.01M Citrate Bufferr (pH 6.0) prior to IHC staining.

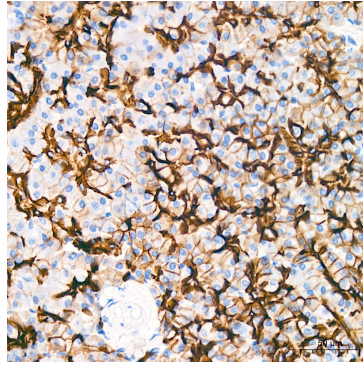


Immunohistochemistry analysis of paraffin-embedded Human esophageal tissue using TROP-2 Rabbit mAb (A20824) at a dilution of 1:8000 (40x lens). High pressure antigen retrieval performed with 0.01M Citrate Bufferr (pH 6.0) prior to IHC staining.

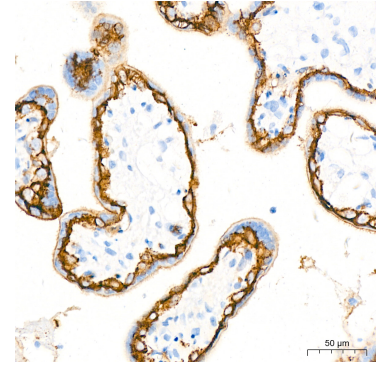
## Validation Data



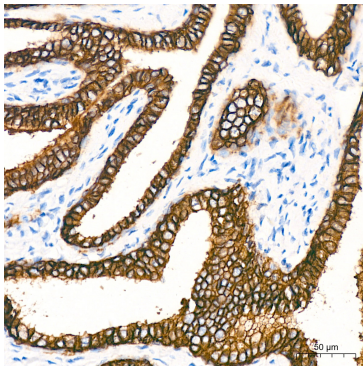
Immunohistochemistry analysis of paraffin-embedded Human kidney tissue using TROP-2 Rabbit mAb (A20824) at a dilution of 1:8000 (40x lens). High pressure antigen retrieval performed with 0.01M Citrate Bufferr (pH 6.0) prior to IHC staining.



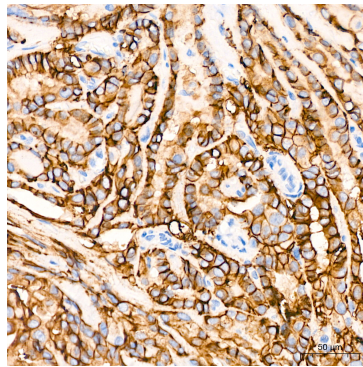
Immunohistochemistry analysis of paraffin-embedded Human pancreas tissue using TROP-2 Rabbit mAb (A20824) at a dilution of 1:8000 (40x lens). High pressure antigen retrieval performed with 0.01M Citrate Bufferr (pH 6.0) prior to IHC staining.



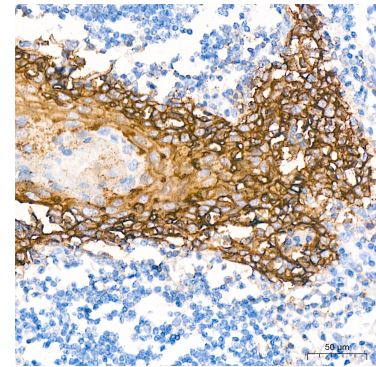
Immunohistochemistry analysis of paraffin-embedded Human placenta tissue using TROP-2 Rabbit mAb (A20824) at a dilution of 1:8000 (40x lens). High pressure antigen retrieval performed with 0.01M Citrate Bufferr (pH 6.0) prior to IHC staining.



Immunohistochemistry analysis of paraffin-embedded Human prostate cancer tissue using TROP-2 Rabbit mAb (A20824) at a dilution of 1:8000 (40x lens). High pressure antigen retrieval performed with 0.01M Citrate Bufferr (pH 6.0) prior to IHC staining.



Immunohistochemistry analysis of paraffin-embedded Human thyroid cancer tissue using TROP-2 Rabbit mAb (A20824) at a dilution of 1:8000 (40x lens). High pressure antigen retrieval performed with 0.01M Citrate Bufferr (pH 6.0) prior to IHC staining.



Immunohistochemistry analysis of paraffin-embedded Human tonsil tissue using TROP-2 Rabbit mAb (A20824) at a dilution of 1:8000 (40x lens). High pressure antigen retrieval performed with 0.01M Citrate Bufferr (pH 6.0) prior to IHC staining.