

SARS-CoV-2 3CLpro Rabbit mAb

Catalog No.: A20831 **Recombinant**

Basic Information

Observed MW

30-35kDa

Calculated MW

141kDa

Category

Primary antibody

Applications

ELISA,WB,IF/ICC

Cross-Reactivity

SARS-CoV-2

CloneNo number

ARC50779

Background

Severe acute respiratory syndrome coronavirus 2 (SARS-CoV-2) is an enveloped, positive-sense, single-stranded RNA virus that causes coronavirus disease 2019 (COVID-19). Virus particles include the RNA genetic material and structural proteins needed for invasion of host cells. Once inside the cell the infecting RNA is used to encode structural proteins that make up virus particles, nonstructural proteins that direct virus assembly, transcription, replication and host control and accessory proteins whose function has not been determined.~ ORF1ab, the largest gene, contains overlapping open reading frames that encode polyproteins PP1ab and PP1a. The polyproteins are cleaved to yield 16 nonstructural proteins, NSP1-16. Production of the longer (PP1ab) or shorter protein (PP1a) depends on a -1 ribosomal frameshifting event. The proteins, based on similarity to other coronaviruses, include the papain-like proteinase protein (NSP3), 3C-like proteinase (NSP5), RNA-dependent RNA polymerase (NSP12, RdRp), helicase (NSP13, HEL), endoRNase (NSP15), 2'-O-Ribose-Methyltransferase (NSP16) and other nonstructural proteins. SARS-CoV-2 nonstructural proteins are responsible for viral transcription, replication, proteolytic processing, suppression of host immune responses and suppression of host gene expression. The RNA-dependent RNA polymerase is a target of antiviral therapies.

Recommended Dilutions

WB	1:2000 - 1:6000
IF/ICC	1:50 - 1:200

Immunogen Information

Gene ID

43740578

Swiss Prot

P0DTC2

Immunogen

Recombinant fusion protein containing a sequence corresponding to amino acids 1-306 of coronavirus 3CLpro (YP_009725295.1).

Synonyms

Spike glycoprotein; S; SARS-CoV-2 3CLpro

Contact

	400-999-6126
	cn.market@abclonal.com.cn
	www.abclonal.com.cn

Product Information

Source

Rabbit

Isotype

IgG

Purification

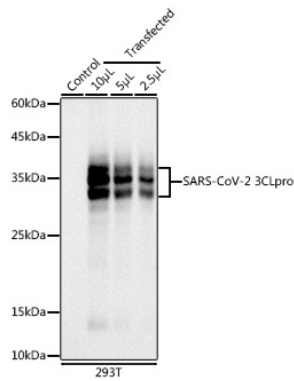
Affinity purification

Storage

Store at -20°C. Avoid freeze / thaw cycles.

Buffer: PBS with 0.05% proclin300,0.05% BSA,50% glycerol,pH7.3.

Validation Data



Western blot analysis of extracts of 293T cells, using SARS-CoV-2 3CLpro antibody (A20831) at 1:5000 dilution.

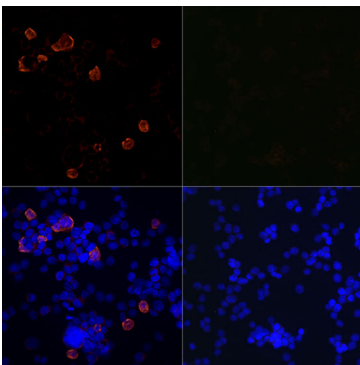
Secondary antibody: HRP Goat Anti-Rabbit IgG (H+L) (AS014) at 1:10000 dilution.

Lysates/proteins: 25µg per lane.

Blocking buffer: 3% nonfat dry milk in TBST.

Detection: ECL Basic Kit (RM00020).

Exposure time: 3s.



Immunofluorescence analysis of 293T-SARS-CoV-2 3CLpro and 293T cells using SARS-CoV-2 3CLpro Rabbit mAb (A20831) at dilution of 1:100 (40x lens). Blue: DAPI for nuclear staining.