

Prdm9 Rabbit mAb

Catalog No.: A20832 **Recombinant**

Basic Information

Observed MW

Refer to figures

Calculated MW

97kDa

Category

Primary antibody

Applications

IHC-P, ELISA, CUT&Tag

Cross-Reactivity

Human

CloneNo number

ARC51589

Background

Enables DNA binding activity; histone-lysine N-methyltransferase activity; and protein homodimerization activity. Involved in several processes, including gamete generation; histone lysine methylation; and meiosis I. Acts upstream of or within several processes, including histone methylation; positive regulation of meiotic nuclear division; and positive regulation of transcription by RNA polymerase II. Located in chromatin and nucleus. Is expressed in embryo and head. Orthologous to human PRDM9 (PR/SET domain 9).

Recommended Dilutions

IHC-P 1:500 - 1:1000

ELISA Recommended starting concentration is 1 µg/mL. Please optimize the concentration based on your specific assay requirements.

CUT&Tag 10⁵ cells /1 µg

Immunogen Information

Gene ID

213389

Swiss Prot

Q96EQ9

Immunogen

Recombinant protein (or fragment). This information is considered to be commercially sensitive.

Synonyms

Rcr1; Dsbc1; repro7; Meisetz; PRDM9-B; G1-419-29; Prdm9

Contact

☎ | 400-999-6126

✉ | cn.market@abclonal.com.cn

🌐 | www.abclonal.com.cn

Product Information

Source

Rabbit

Isotype

IgG

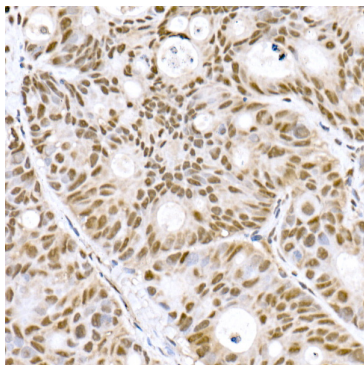
Purification

Affinity purification

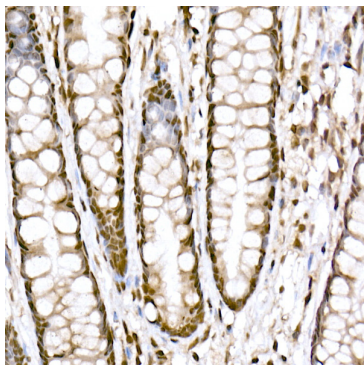
Storage

Store at -20°C. Avoid freeze / thaw cycles.

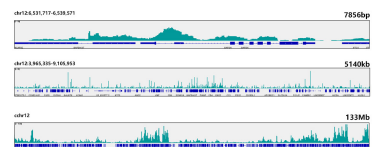
Buffer: PBS containing 50% glycerol and 0.05% BSA, preserved with proclin300 or sodium azide (as specified on the Certificate of Analysis), pH 7.3.



Immunohistochemistry analysis of paraffin-embedded Human colon carcinoma using Prdm9 Rabbit mAb (A20832) at dilution of 1:800 (40x lens). High pressure antigen retrieval performed with 0.01M Citrate buffer (pH 6.0) prior to IHC staining.



Immunohistochemistry analysis of paraffin-embedded Human colon using Prdm9 Rabbit mAb (A20832) at dilution of 1:800 (40x lens). High pressure antigen retrieval performed with 0.01M Citrate buffer (pH 6.0) prior to IHC staining.



CUT&Tag was performed using the CUT&Tag Assay Kit (pAG-Tn5) for Illumina(RK20265) from 10^5 Hep G2 cells with 1 μ g Prdm9 Rabbit mAb (A20832), along with a Goat Anti-Rabbit IgG(H+L). The CUT&Tag results indicate the enrichment pattern of Prdm9 in representative gene loci (GAPDH), as shown in figure.