

TET1 Rabbit mAb

Catalog No.: A20833 **Recombinant**

Basic Information

Observed MW

260kDa

Calculated MW

219kDa

Category

Primary antibody

Applications

IHC-P,ELISA

Cross-Reactivity

Human

CloneNo number

ARC51466

Background

Enables methylcytosine dioxygenase activity. Involved in several processes, including dendrite morphogenesis; inner cell mass cell differentiation; and protein O-linked glycosylation. Acts upstream of or within DNA demethylation; regulation of DNA methylation; and regulation of genetic imprinting. Located in nucleus. Is expressed in several structures, including brain; early conceptus; embryo ectoderm; lower urogenital tract; and reproductive system. Orthologous to human TET1 (tet methylcytosine dioxygenase 1).

Recommended Dilutions

IHC-P 1:50 - 1:200

ELISA Recommended starting concentration is 1 µg/mL. Please optimize the concentration based on your specific assay requirements.

Immunogen Information

Gene ID

52463

Swiss Prot

Q3URK3

Immunogen

Recombinant protein (or fragment). This information is considered to be commercially sensitive.

Synonyms

LCX; Cxxc6; mKIAA1676; D10Ert17e; 2510010B09Rik; TET1

Contact

☎ | 400-999-6126

✉ | cn.market@abclonal.com.cn

🌐 | www.abclonal.com.cn

Product Information

Source

Rabbit

Isotype

IgG

Purification

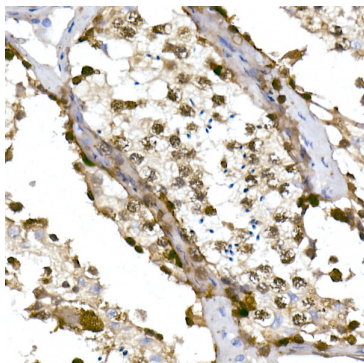
Affinity purification

Storage

Store at -20°C. Avoid freeze / thaw cycles.

Buffer: PBS containing 50% glycerol and 0.05% BSA, preserved with proclin300 or sodium azide (as specified on the Certificate of Analysis), pH 7.3.

Validation Data



Immunohistochemistry analysis of paraffin-embedded Human testis using TET1 Rabbit mAb (A20833) at dilution of 1:100 (40x lens). High pressure antigen retrieval performed with 0.01M Citrate buffer (pH 6.0) prior to IHC staining.