

# [KO Validated] SLC25A4/ANT1 Rabbit mAb

Catalog No.: A20842 **KO Validated** **Recombinant** **1 Publications**

## Basic Information

### Observed MW

33kDa

### Calculated MW

33kDa

### Category

Primary antibody

### Applications

ELISA, WB, IF/ICC, IP

### Cross-Reactivity

Human, Mouse, Rat

### CloneNo number

ARC51442

## Background

This gene is a member of the mitochondrial carrier subfamily of solute carrier protein genes. The product of this gene functions as a gated pore that translocates ADP from the cytoplasm into the mitochondrial matrix and ATP from the mitochondrial matrix into the cytoplasm. The protein forms a homodimer embedded in the inner mitochondria membrane. Mutations in this gene have been shown to result in autosomal dominant progressive external ophthalmoplegia and familial hypertrophic cardiomyopathy.

## Recommended Dilutions

**WB** 1:500 - 1:1000

**IF/ICC** 1:50 - 1:200

**IP** 0.5µg-4µg antibody for  
200µg-400µg extracts of  
whole cells

## Immunogen Information

### Gene ID

291

### Swiss Prot

P12235

### Immunogen

A synthetic peptide corresponding to a sequence within amino acids 100-200 of human SLC25A4/ANT1 (NP\_001142.2).

### Synonyms

T1; ANT; AAC1; ANT1; PEO2; PEO3; ANT 1; PEOA2; MTDPS12; MTDPS12A

## Contact

☎ | 400-999-6126

✉ | [cn.market@abclonal.com.cn](mailto:cn.market@abclonal.com.cn)

🌐 | [www.abclonal.com.cn](http://www.abclonal.com.cn)

## Product Information

### Source

Rabbit

### Isotype

IgG

### Purification

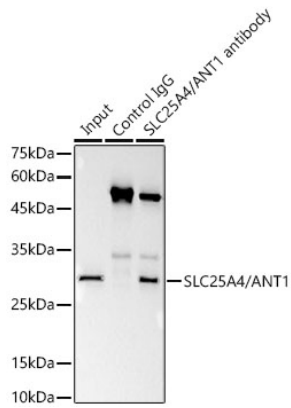
Affinity purification

### Storage

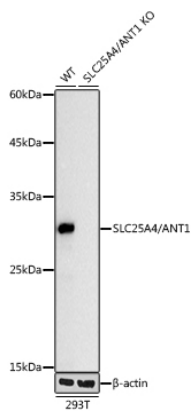
Store at -20°C. Avoid freeze / thaw cycles.

Buffer: PBS with 0.05% proclin300, 0.05% BSA, 50% glycerol, pH7.3.

## Validation Data



Immunoprecipitation analysis of 300 µg extracts of 293T cells using 3 µg SLC25A4/ANT1 antibody (A20842). Western blot was performed from the immunoprecipitate using SLC25A4/ANT1 antibody (A20842) at a dilution of 1:1000.



Western blot analysis of lysates from wild type (WT) and SLC25A4/ANT1 knockout (KO) 293T cells, using [KO Validated] SLC25A4/ANT1 Rabbit mAb (A20842) at 1:1000 dilution.

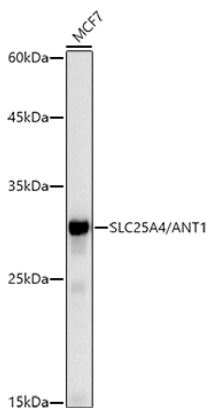
Secondary antibody: HRP Goat Anti-Rabbit IgG (H+L) (AS014) at 1:10000 dilution.

Lysates/proteins: 25µg per lane.

Blocking buffer: 3% nonfat dry milk in TBST.

Detection: ECL Basic Kit (RM00020).

Exposure time: 10s.



Western blot analysis of lysates from MCF7 cells, using [KO Validated] SLC25A4/ANT1 Rabbit mAb (A20842) at 1:1000 dilution.

Secondary antibody: HRP Goat Anti-Rabbit IgG (H+L) (AS014) at 1:10000 dilution.

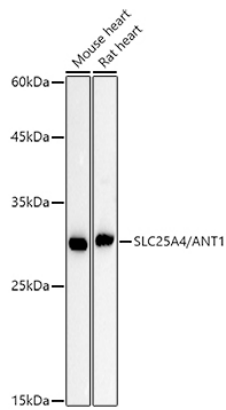
Lysates/proteins: 25µg per lane.

Blocking buffer: 3% nonfat dry milk in TBST.

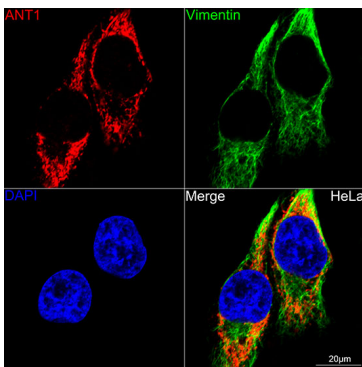
Detection: ECL Basic Kit (RM00020).

Exposure time: 10s.

## Validation Data



Western blot analysis of various lysates using [KO Validated] SLC25A4/ANT1 Rabbit mAb (A20842) at 1:1000 dilution.  
Secondary antibody: HRP Goat Anti-Rabbit IgG (H+L) (AS014) at 1:10000 dilution.  
Lysates/proteins: 25µg per lane.  
Blocking buffer: 3% nonfat dry milk in TBST.  
Detection: ECL Basic Kit (RM00020).  
Exposure time: 60s.



Confocal imaging of HeLa cells using [KO Validated] SLC25A4/ANT1 Rabbit mAb (A20842, dilution 1:100) (Red). The cells were counterstained with [KO Validated] Vimentin Rabbit mAb (A19607, dilution 1:100) (Green). DAPI was used for nuclear staining (blue). Objective: 60x.