

# IGF2 Rabbit pAb

Catalog No.: A2086

6 Publications

## Basic Information

### Observed MW

20kDa

### Calculated MW

20kDa

### Category

Primary antibody

### Applications

ELISA, WB, IHC-P, IF/ICC

### Cross-Reactivity

Human, Mouse, Rat

## Background

This gene encodes a member of the insulin family of polypeptide growth factors, which are involved in development and growth. It is an imprinted gene, expressed only from the paternal allele, and epigenetic changes at this locus are associated with Wilms tumour, Beckwith-Wiedemann syndrome, rhabdomyosarcoma, and Silver-Russell syndrome. A read-through INS-IGF2 gene exists, whose 5' region overlaps the INS gene and the 3' region overlaps this gene. Alternatively spliced transcript variants encoding different isoforms have been found for this gene.

## Recommended Dilutions

WB	1:500 - 1:1000
IHC-P	1:50 - 1:200
IF/ICC	1:50 - 1:200

## Immunogen Information

### Gene ID

3481

### Swiss Prot

P01344

### Immunogen

Recombinant fusion protein containing a sequence corresponding to amino acids 25-180 of human IGF2 (NP\_000603.1).

### Synonyms

GRDF; SRS3; IGF-II; PP9974; C11orf43; IGF2

## Contact

☎ | 400-999-6126

✉ | [cn.market@abclonal.com.cn](mailto:cn.market@abclonal.com.cn)

🌐 | [www.abclonal.com.cn](http://www.abclonal.com.cn)

## Product Information

### Source

Rabbit

### Isotype

IgG

### Purification

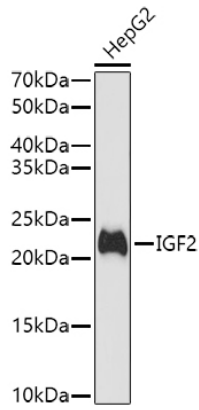
Affinity purification

### Storage

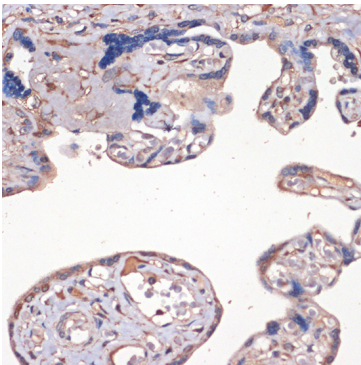
Store at -20°C. Avoid freeze / thaw cycles.

Buffer: PBS with 0.01% thimerosal, 50% glycerol, pH7.3.

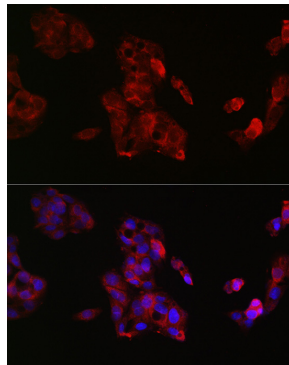
## Validation Data



Western blot analysis of lysates from HepG2 cells, using IGF2 Rabbit pAb (A2086) at 1:1000 dilution.  
Secondary antibody: HRP Goat Anti-Rabbit IgG (H+L) (AS014) at 1:10000 dilution.  
Lysates/proteins: 25µg per lane.  
Blocking buffer: 3% nonfat dry milk in TBST.  
Detection: ECL Basic Kit (RM00020).  
Exposure time: 180s.



Immunohistochemistry analysis of paraffin-embedded human placenta using IGF2 Rabbit pAb (A2086) at dilution of 1:100 (40x lens). Perform microwave antigen retrieval with 10 mM Tris/EDTA buffer pH 9.0 before commencing with IHC staining protocol.



Immunofluorescence analysis of HepG2 cells using IGF2 Rabbit pAb (A2086) at dilution of 1:50 (40x lens). Secondary antibody: Cy3 Goat Anti-Rabbit IgG (H+L) (AS007) at 1:500 dilution. Blue: DAPI for nuclear staining.