

# Ly-6G Rabbit pAb

Catalog No.: A20861 **1 Publications**

## Basic Information

### Observed MW

20-40kDa

### Calculated MW

14kDa

### Category

Primary antibody

### Applications

ELISA, WB, IF/ICC

### Cross-Reactivity

Mouse

## Background

Located in external side of plasma membrane.

## Recommended Dilutions

**WB** 1:500 - 1:1000

**IF/ICC** 1:50 - 1:200

## Immunogen Information

### Gene ID

546644

### Swiss Prot

P35461

### Immunogen

Recombinant fusion protein containing a sequence corresponding to amino acids 27-105 of mouse Ly-6G (NP\_001297367.1).

### Synonyms

Gr1; Gr-1; Ly-6G

## Contact

☎ | 400-999-6126

✉ | [cn.market@abclonal.com.cn](mailto:cn.market@abclonal.com.cn)

🌐 | [www.abclonal.com.cn](http://www.abclonal.com.cn)

## Product Information

### Source

Rabbit

### Isotype

IgG

### Purification

Affinity purification

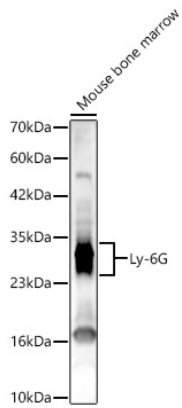
### Storage

Store at -20°C. Avoid freeze / thaw cycles.

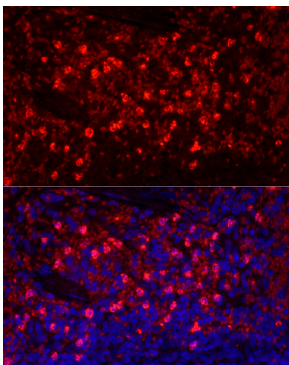
Buffer: PBS with 0.05% proclin300, 50% glycerol, pH7.3.

## Validation Data

---



Western blot analysis of Mouse bone marrow, using Ly-6G Rabbit pAb (A20861) at 1:400 dilution.  
Secondary antibody: HRP Goat Anti-Rabbit IgG (H+L) (AS014) at 1:10000 dilution.  
Lysates/proteins: 25ug per lane.  
Blocking buffer: 3% nonfat dry milk in TBST.  
Detection: ECL Basic Kit (RM00020).  
Exposure time: 180s.



Immunofluorescence analysis of mouse spleen cells using Ly-6G Rabbit pAb (A20861) at dilution of 1:50 (40x lens). Blue: DAPI for nuclear staining.