

PNMT Rabbit mAb

Catalog No.: A20862 **Recombinant**

Basic Information

Observed MW

31kDa

Calculated MW

31kDa

Category

Primary antibody

Applications

ELISA, WB, IF/ICC

Cross-Reactivity

Human, Mouse, Rat

CloneNo number

ARC2786

Background

The product of this gene catalyzes the last step of the catecholamine biosynthesis pathway, which methylates norepinephrine to form epinephrine (adrenaline). The enzyme also has beta-carboline 2N-methyltransferase activity. This gene is thought to play a key step in regulating epinephrine production. Alternatively spliced transcript variants have been found for this gene.

Recommended Dilutions

WB 1:500 - 1:1000

IF/ICC 1:50 - 1:200

Immunogen Information

Gene ID

5409

Swiss Prot

P11086

Immunogen

A synthetic peptide corresponding to a sequence within amino acids 183-282 of human PNMT (P11086).

Synonyms

PENT; PNMTase; PNMT

Contact

☎ | 400-999-6126

✉ | cn.market@abclonal.com.cn

🌐 | www.abclonal.com.cn

Product Information

Source

Rabbit

Isotype

IgG

Purification

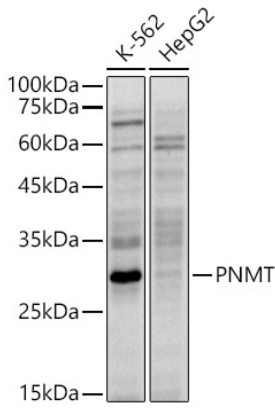
Affinity purification

Storage

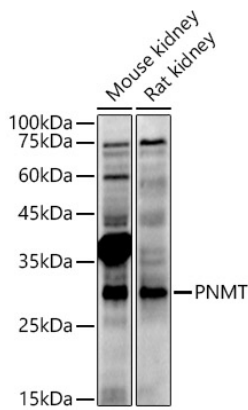
Store at -20°C. Avoid freeze / thaw cycles.

Buffer: PBS with 0.02% sodium azide, 0.05% BSA, 50% glycerol, pH7.3.

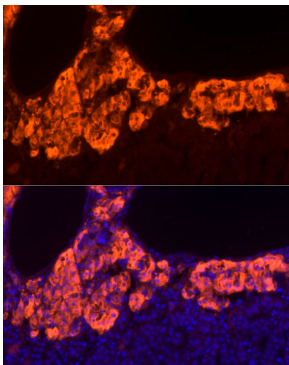
Validation Data



Western blot analysis of extracts of various cell lines, using PNMT antibody (A20862) at 1:1000 dilution.
Secondary antibody: HRP Goat Anti-Rabbit IgG (H+L) (AS014) at 1:10000 dilution.
Lysates/proteins: 25µg per lane.
Blocking buffer: 3% nonfat dry milk in TBST.
Detection: ECL Enhanced Kit (RM00021).
Exposure time: 60s.



Western blot analysis of extracts of various cell lines, using PNMT antibody (A20862) at 1:1000 dilution.
Secondary antibody: HRP Goat Anti-Rabbit IgG (H+L) (AS014) at 1:10000 dilution.
Lysates/proteins: 25µg per lane.
Blocking buffer: 3% nonfat dry milk in TBST.
Detection: ECL Enhanced Kit (RM00021).
Exposure time: 180s.



Immunofluorescence analysis of Human adrenal gland cells using PNMT Rabbit mAb (A20862) at dilution of 1:100 (40x lens).
Blue: DAPI for nuclear staining.