

P2Y12 Rabbit mAb

Catalog No.: A20864 **Recombinant**

Basic Information

Observed MW

55kDa

Calculated MW

39kDa

Category

Primary antibody

Applications

WB,IF-P,ELISA

Cross-Reactivity

Mouse, Rat

CloneNo number

ARC2792

Background

Enables G protein-coupled ADP receptor activity and G protein-coupled adenosine receptor activity. Involved in several processes, including cellular response to ATP; regulation of microglial cell migration; and substrate-dependent cell migration, cell extension. Acts upstream of or within several processes, including adenylate cyclase-modulating G protein-coupled receptor signaling pathway; platelet activation; and positive regulation of ion transport. Located in cell body membrane and cell projection membrane. Is expressed in central nervous system and cerebral cortex. Used to study platelet-type bleeding disorder 8. Human ortholog(s) of this gene implicated in asthma; cerebrovascular disease; peripheral artery disease; platelet-type bleeding disorder 8; and type 2 diabetes mellitus. Orthologous to human P2RY12 (purinergic receptor P2Y12).

Recommended Dilutions

WB 1:1000 - 1:4000

IF-P 1:50 - 1:200

ELISA Recommended starting concentration is 1 µg/mL. Please optimize the concentration based on your specific assay requirements.

Immunogen Information

Gene ID

70839

Swiss Prot

Q9CPV9

Immunogen

Recombinant protein (or fragment). This information is considered to be commercially sensitive.

Synonyms

P2Y12; 2900079B22Rik; 4921504D23Rik

Contact

☎ | 400-999-6126

✉ | cn.market@abclonal.com.cn

🌐 | www.abclonal.com.cn

Product Information

Source

Rabbit

Isotype

IgG

Purification

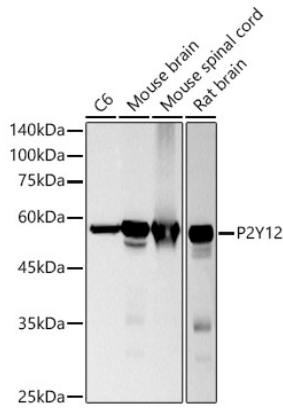
Affinity purification

Storage

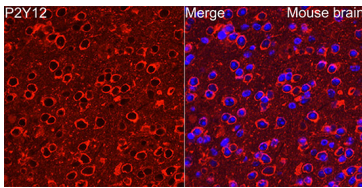
Store at -20°C. Avoid freeze / thaw cycles.

Buffer: PBS containing 50% glycerol and 0.05% BSA, preserved with proclin300 or sodium azide (as specified on the Certificate of Analysis), pH 7.3.

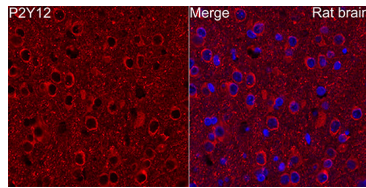
Validation Data



Western blot analysis of various lysates using P2Y12 Rabbit mAb (A20864) at 1:1000 dilution. Secondary antibody: HRP-conjugated Goat anti-Rabbit IgG (H+L) (AS014) at 1:10000 dilution. Lysates/proteins: 25µg per lane. Blocking buffer: 3% nonfat dry milk in TBST. Detection: ECL Basic Kit (RM00020). Exposure time: 3s.



Immunofluorescence analysis of Mouse brain tissue using P2Y12 Rabbit mAb (A20864) at a dilution of 1:50 (40x lens). Secondary antibody: Cy3-conjugated Goat anti-Rabbit IgG (H+L)(AS007) at 1:500 dilution. Blue: DAPI for nuclear staining. High pressure antigen retrieval performed with 0.01M Citrate Buffer (pH 6.0) prior to IF staining.



Immunofluorescence analysis of Rat brain tissue using P2Y12 Rabbit mAb (A20864) at a dilution of 1:50 (40x lens). Secondary antibody: Cy3-conjugated Goat anti-Rabbit IgG (H+L)(AS007) at 1:500 dilution. Blue: DAPI for nuclear staining. High pressure antigen retrieval performed with 0.01M Citrate Buffer (pH 6.0) prior to IF staining.