

Lactate Dehydrogenase C Rabbit mAb

Catalog No.: A20866 **Recombinant**

Basic Information

Observed MW

36kDa

Calculated MW

36kDa

Category

Primary antibody

Applications

ELISA, WB

Cross-Reactivity

Human

CloneNo number

ARC2796

Background

Lactate dehydrogenase C catalyzes the conversion of L-lactate and NAD to pyruvate and NADH in the final step of anaerobic glycolysis. LDHC is testis-specific and belongs to the lactate dehydrogenase family. Two transcript variants have been detected which differ in the 5' untranslated region.

Recommended Dilutions

WB 1:100 - 1:500

Immunogen Information

Gene ID

3948

Swiss Prot

P07864

Immunogen

A synthetic peptide corresponding to a sequence within amino acids 1-100 of human Lactate Dehydrogenase C (P07864).

Synonyms

CT32; LDH3; LDHX; Lactate Dehydrogenase C

Contact

☎ | 400-999-6126

✉ | cn.market@abclonal.com.cn

🌐 | www.abclonal.com.cn

Product Information

Source

Rabbit

Isotype

IgG

Purification

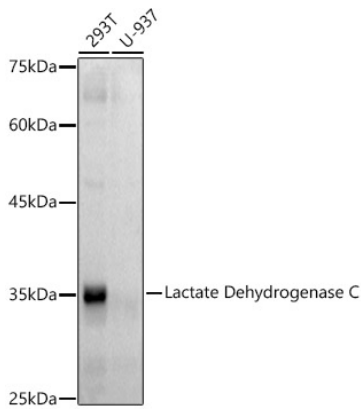
Affinity purification

Storage

Store at -20°C. Avoid freeze / thaw cycles.

Buffer: PBS with 0.02% sodium azide, 0.05% BSA, 50% glycerol, pH7.3.

Validation Data



Western blot analysis of extracts of various cell lines, using Lactate Dehydrogenase C antibody (A20866) at 1:500 dilution.

Secondary antibody: HRP Goat Anti-Rabbit IgG (H+L) (AS014) at 1:10000 dilution.

Lysates/proteins: 25µg per lane.

Blocking buffer: 3% nonfat dry milk in TBST.

Detection: ECL Basic Kit (RM00020).

Exposure time: 60s.