

RSK2 / RPS6KA3 Rabbit mAb

Catalog No.: A20868

Recombinant

Basic Information

Observed MW

84kDa

Calculated MW

84kDa

Category

Primary antibody

Applications

WB,IHC-P,ELISA

Cross-Reactivity

Human, Mouse, Rat

CloneNo number

ARC2799

Background

This gene encodes a member of the RSK (ribosomal S6 kinase) family of serine/threonine kinases. This kinase contains 2 non-identical kinase catalytic domains and phosphorylates various substrates, including members of the mitogen-activated kinase (MAPK) signalling pathway. The activity of this protein has been implicated in controlling cell growth and differentiation. Mutations in this gene have been associated with Coffin-Lowry syndrome (CLS).

Recommended Dilutions

WB 1:100 - 1:500

IHC-P 1:50 - 1:200

ELISA Recommended starting concentration is 1 µg/mL. Please optimize the concentration based on your specific assay requirements.

Immunogen Information

Gene ID

6197

Swiss Prot

P51812

Immunogen

Synthetic peptide. This information is considered to be commercially sensitive.

Synonyms

CLS; RSK; HU-3; RSK2; MRX19; ISPK-1; XLID19; p90-RSK2; pp90RSK2; MAPKAPK1B; S6K-alpha3; RSK2 / RPS6KA3

Contact

☎ | 400-999-6126

✉ | cn.market@abclonal.com.cn

🌐 | www.abclonal.com.cn

Product Information

Source

Rabbit

Isotype

IgG

Purification

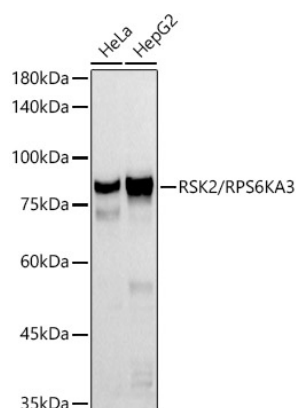
Affinity purification

Storage

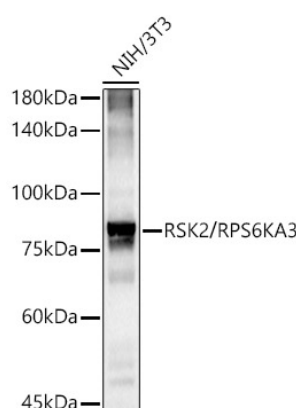
Store at -20°C. Avoid freeze / thaw cycles.

Buffer: PBS with 0.02% sodium azide,0.05% BSA,50% glycerol,pH7.3.

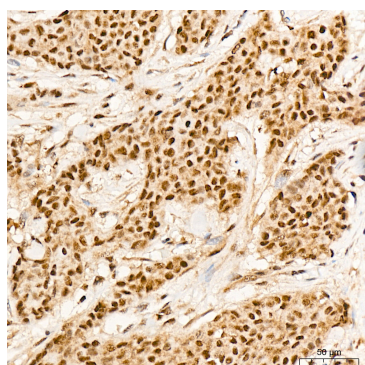
Validation Data



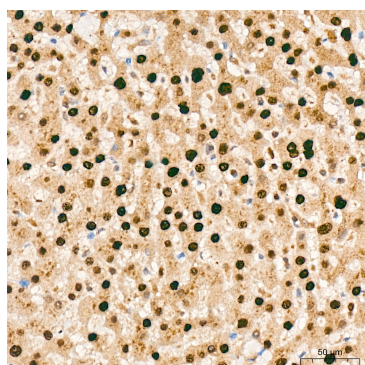
Western blot analysis of various lysates using RSK2 / RPS6KA3 Rabbit mAb (A20868) at 1:500 dilution.
 Secondary antibody: HRP-conjugated Goat anti-Rabbit IgG (H+L) (AS014) at 1:10000 dilution.
 Lysates/proteins: 25µg per lane.
 Blocking buffer: 3% nonfat dry milk in TBST.
 Detection: ECL Basic Kit (RM00020).
 Exposure time: 60s.



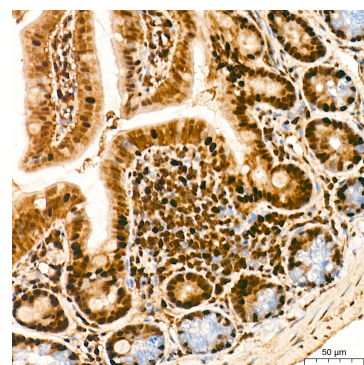
Western blot analysis of lysates from NIH/3T3 cells, using RSK2 / RPS6KA3 Rabbit mAb (A20868) at 1:500 dilution.
 Secondary antibody: HRP-conjugated Goat anti-Rabbit IgG (H+L) (AS014) at 1:10000 dilution.
 Lysates/proteins: 25µg per lane.
 Blocking buffer: 3% nonfat dry milk in TBST.
 Detection: ECL Basic Kit (RM00020).
 Exposure time: 180s.



Immunohistochemistry analysis of paraffin-embedded Human breast cancer tissue using RSK2 / RPS6KA3 Rabbit mAb (A20868) at a dilution of 1:200 (40x lens). High pressure antigen retrieval was performed with 0.01 M citrate buffer (pH 6.0) prior to IHC staining.

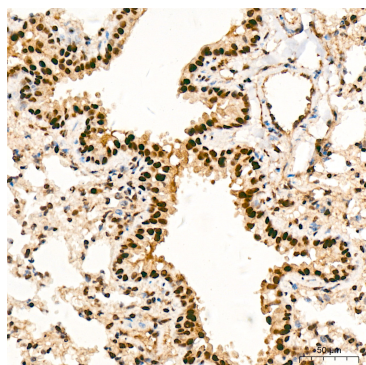


Immunohistochemistry analysis of paraffin-embedded Human liver tissue using RSK2 / RPS6KA3 Rabbit mAb (A20868) at a dilution of 1:200 (40x lens). High pressure antigen retrieval was performed with 0.01 M citrate buffer (pH 6.0) prior to IHC staining.

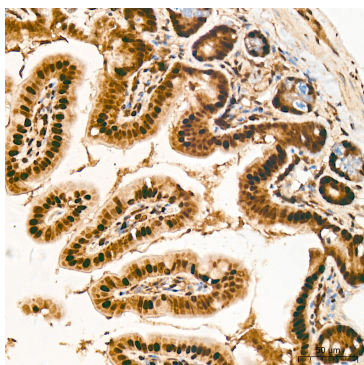


Immunohistochemistry analysis of paraffin-embedded Mouse intestine tissue using RSK2 / RPS6KA3 Rabbit mAb (A20868) at a dilution of 1:200 (40x lens). High pressure antigen retrieval was performed with 0.01 M citrate buffer (pH 6.0) prior to IHC staining.

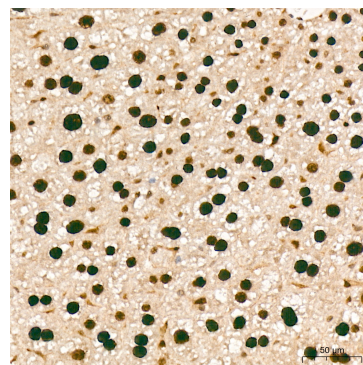
Validation Data



Immunohistochemistry analysis of paraffin-embedded Mouse lung tissue using RSK2 / RPS6KA3 Rabbit mAb (A20868) at a dilution of 1:200 (40x lens). High pressure antigen retrieval was performed with 0.01 M citrate buffer (pH 6.0) prior to IHC staining.



Immunohistochemistry analysis of paraffin-embedded Rat intestine tissue using RSK2 / RPS6KA3 Rabbit mAb (A20868) at a dilution of 1:200 (40x lens). High pressure antigen retrieval was performed with 0.01 M citrate buffer (pH 6.0) prior to IHC staining.



Immunohistochemistry analysis of paraffin-embedded Rat liver tissue using RSK2 / RPS6KA3 Rabbit mAb (A20868) at a dilution of 1:200 (40x lens). High pressure antigen retrieval was performed with 0.01 M citrate buffer (pH 6.0) prior to IHC staining.