

GRSF1 Rabbit mAb

Catalog No.: A20879

Recombinant

1 Publications

Basic Information

Observed MW

53 kDa

Calculated MW

53 kDa

Category

Primary antibody

Applications

WB,IF/ICC,IP,ELISA

Cross-Reactivity

Human,Mouse,Rat

CloneNo number

ARC2825

Background

The protein encoded by this gene is a cellular protein that binds RNAs containing the G-rich element. The protein is localized in the cytoplasm, and has been shown to stimulate translation of viral mRNAs in vitro. Multiple transcript variants encoding different isoforms have been found for this gene.

Recommended Dilutions

WB 1:1000 - 1:6000

IF/ICC 1:50 - 1:200

IP 0.5µg-4µg antibody for 200µg-400µg extracts of whole cells

ELISA Recommended starting concentration is 1 µg/mL. Please optimize the concentration based on your specific assay requirements.

Contact

☎ | 400-999-6126

✉ | cn.market@abclonal.com.cn

🌐 | www.abclonal.com.cn

Immunogen Information

Gene ID

2926

Swiss Prot

Q12849

Immunogen

Synthetic peptide. This information is considered to be commercially sensitive.

Synonyms

GRSF1

Product Information

Source

Rabbit

Isotype

IgG

Purification

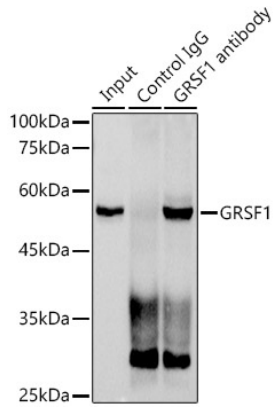
Affinity purification

Storage

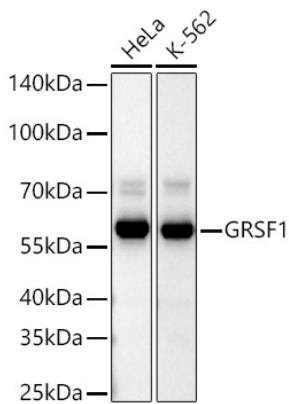
Store at -20°C. Avoid freeze / thaw cycles.

Buffer: PBS containing 50% glycerol and 0.05% BSA, preserved with proclin300 or sodium azide (as specified on the Certificate of Analysis), pH 7.3.

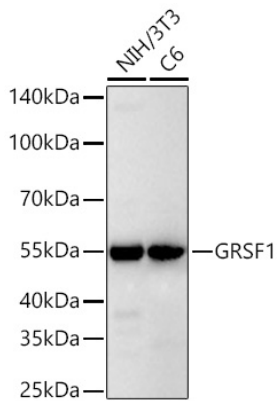
Validation Data



Immunoprecipitation analysis of 300 µg extracts of HeLa cells using 3 µg GRSF1 antibody (A20879). Western blot was performed from the immunoprecipitate using GRSF1 antibody (A20879) at a dilution of 1:1000.

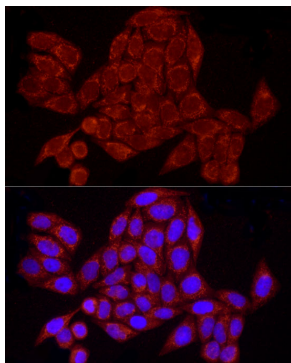


Western blot analysis of various lysates using GRSF1 Rabbit mAb (A20879) at 1:1000 dilution incubated overnight at 4°C. Secondary antibody: HRP-conjugated Goat anti-Rabbit IgG (H+L) (AS014) at 1:10000 dilution. Lysates/proteins: 25 µg per lane. Blocking buffer: 3% nonfat dry milk in TBST. Detection: ECL Basic Kit (RM00020). Exposure time: 10 s.



Western blot analysis of various lysates using GRSF1 Rabbit mAb (A20879) at 1:1000 dilution incubated overnight at 4°C. Secondary antibody: HRP-conjugated Goat anti-Rabbit IgG (H+L) (AS014) at 1:10000 dilution. Lysates/proteins: 25 µg per lane. Blocking buffer: 3% nonfat dry milk in TBST. Detection: ECL Basic Kit (RM00020). Exposure time: 10 s.

Validation Data



Immunofluorescence analysis of HeLa cells using GRSF1 Rabbit mAb (A20879) at dilution of 1:50 (40x lens). Secondary antibody: Cy3-conjugated Goat anti-Rabbit IgG (H+L) (AS007) at 1:500 dilution. Blue: DAPI for nuclear staining.