

IKK β Rabbit pAb

Catalog No.: A2087SP

Basic Information

Observed MW

87 kDa

Calculated MW

29-87 kDa

Category

Primary antibody

Applications

WB,IP,IF/ICC,ELISA

Cross-Reactivity

Human, Mouse

Background

The protein encoded by this gene phosphorylates the inhibitor in the inhibitor/NF-kappa-B complex, causing dissociation of the inhibitor and activation of NF-kappa-B. The encoded protein itself is found in a complex of proteins. Several transcript variants, some protein-coding and some not, have been found for this gene.

Recommended Dilutions

WB 1:5000 - 1:20000

IP 0.5 μ g - 4 μ g antibody for
200 μ g - 400 μ g extracts
of whole cells

IF/ICC 1:200 - 1:400

ELISA Recommended starting
concentration is 1 μ g/mL.
Please optimize the
concentration based on
your specific assay
requirements. For high-
ratio antibody dilutions
(\geq 1:10000) a sequential
dilution method is
strongly recommended
to ensure measurement
accuracy.

Immunogen Information

Gene ID

3551

Swiss Prot

O14920

Immunogen

This information is considered to be commercially sensitive.

Synonyms

IKK2; IKKB; IMD15; IMD15A; IMD15B; NFKBIKB; IKK-beta; IKK β

Product Information

Source

Rabbit

Isotype

IgG

Purification

Affinity purification

Storage

Store at -20°C. Avoid freeze / thaw cycles.

Buffer: PBS, pH 7.3, containing 50% glycerol. Preserved with Proclin300 or sodium azide.

May contain 0.05% BSA as specified on the Certificate of Analysis.

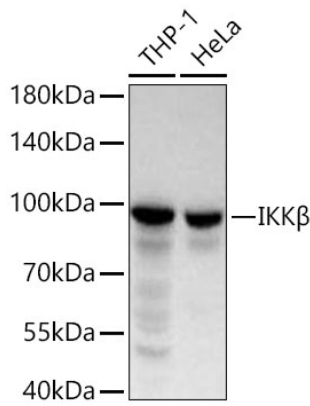
Contact

 | 400-999-6126

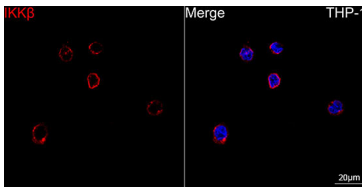
 | cn.market@abclonal.com.cn

 | www.abclonal.com.cn

Validation Data



Western blot analysis of various lysates using IKK β Rabbit pAb (A2087SP) at 1:14000 dilution incubated at room temperature for 1.5 hours.
Secondary antibody: HRP-conjugated Goat anti-Rabbit IgG (H+L) (AS014) at 1:10000 dilution.
Lysates/proteins: 25 μ g per lane.
Blocking buffer: 3% nonfat dry milk in TBST.
Detection: ECL Basic Kit (RM00020).
Exposure time: 5 s.



Confocal imaging of THP-1 cells using IKK β Rabbit pAb (A2087SP, dilution 1:200) followed by a further incubation with Cy3-conjugated Goat anti-Rabbit IgG (H+L) (AS007, dilution 1:500) (Red). DAPI was used for nuclear staining (Blue). Objective: 100x.