

RAB5C / RABL Rabbit mAb

Catalog No.: A20882 **Recombinant** **1 Publications**

Basic Information

Observed MW

23kDa

Calculated MW

23kDa

Category

Primary antibody

Applications

WB,IF/ICC,IP,ELISA

Cross-Reactivity

Human, Mouse, Rat

CloneNo number

ARC2829

Background

Members of the Rab protein family are small GTPases of the Ras superfamily that are thought to ensure fidelity in the process of docking and/or fusion of vesicles with their correct acceptor compartment (Han et al., 1996 [PubMed 8646882]).

Recommended Dilutions

WB 1:1000 - 1:4000

IF/ICC 1:50 - 1:200

IP 0.5µg-4µg antibody for
200µg-400µg extracts of
whole cells

ELISA Recommended starting
concentration is 1 µg/mL.
Please optimize the
concentration based on
your specific assay
requirements.

Immunogen Information

Gene ID

5878

Swiss Prot

P51148

Immunogen

Recombinant protein (or fragment). This information is considered to be commercially sensitive.

Synonyms

RABL; L1880; RAB5L; RAB5CL; RAB5C / RABL

Contact

 | 400-999-6126

 | cn.market@abclonal.com.cn

 | www.abclonal.com.cn

Product Information

Source

Rabbit

Isotype

IgG

Purification

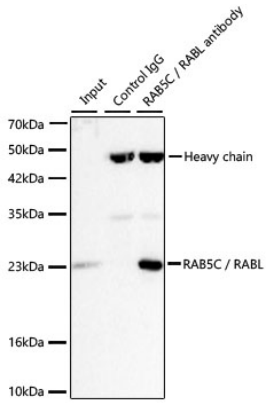
Affinity purification

Storage

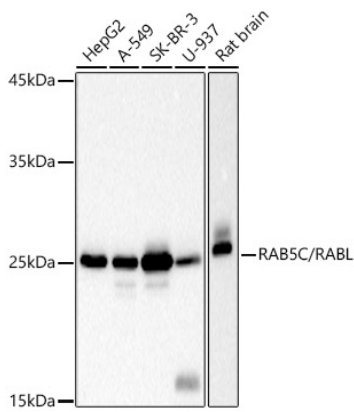
Store at -20°C. Avoid freeze / thaw cycles.

Buffer: PBS containing 50% glycerol and 0.05% BSA, preserved with proclin300 or sodium azide (as specified on the Certificate of Analysis), pH 7.3.

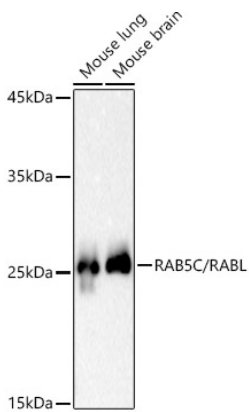
Validation Data



Immunoprecipitation of RAB5C/RABL from 300 µg extracts of Hep G2 cells was performed using 3 µg of RAB5C/RABL Rabbit mAb (A20882). Rabbit IgG isotype control (AC005) was used to precipitate the Control IgG sample. IP samples were eluted with 1X reducing Laemmli Buffer. The Input lane represents 10% of the total input. Western blot analysis of immunoprecipitates was conducted using RAB5C/RABL Rabbit mAb (A20882) at a dilution of 1:1000.

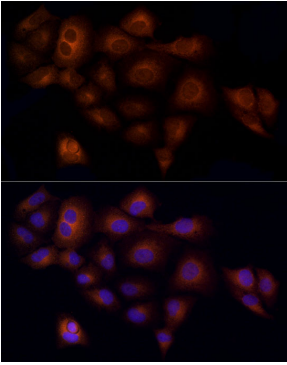


Western blot analysis of various lysates using RAB5C / RABL Rabbit mAb (A20882) at 1:1000 dilution. Secondary antibody: HRP-conjugated Goat anti-Rabbit IgG (H+L) (AS014) at 1:10000 dilution. Lysates/proteins: 25µg per lane. Blocking buffer: 3% nonfat dry milk in TBST. Detection: ECL Basic Kit (RM00020). Exposure time: 10s.

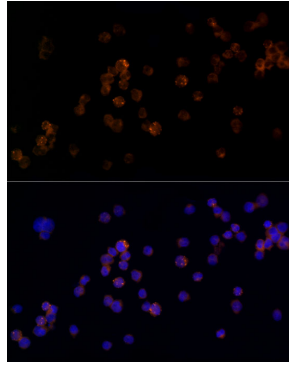


Western blot analysis of various lysates using RAB5C / RABL Rabbit mAb (A20882) at 1:1000 dilution. Secondary antibody: HRP-conjugated Goat anti-Rabbit IgG (H+L) (AS014) at 1:10000 dilution. Lysates/proteins: 25µg per lane. Blocking buffer: 3% nonfat dry milk in TBST. Detection: ECL Basic Kit (RM00020). Exposure time: 30s.

Validation Data



Immunofluorescence analysis of A-549 cells using RAB5C / RABL Rabbit mAb (A20882) at dilution of 1:100 (40x lens). Secondary antibody: Cy3-conjugated Goat anti-Rabbit IgG (H+L) (AS007) at 1:500 dilution. Blue: DAPI for nuclear staining.



Immunofluorescence analysis of U-937 cells using RAB5C / RABL Rabbit mAb (A20882) at dilution of 1:100 (40x lens). Secondary antibody: Cy3-conjugated Goat anti-Rabbit IgG (H+L) (AS007) at 1:500 dilution. Blue: DAPI for nuclear staining.