

# NAT1 Rabbit mAb

Catalog No.: A20897 **Recombinant**

## Basic Information

### Observed MW

33kDa

### Calculated MW

34kDa

### Category

Primary antibody

### Applications

ELISA, WB, IF/ICC

### Cross-Reactivity

Human, Mouse, Rat

### CloneNo number

ARC2858

## Background

This gene is one of two arylamine N-acetyltransferase (NAT) genes in the human genome, and is orthologous to the mouse and rat Nat2 genes. The enzyme encoded by this gene catalyzes the transfer of an acetyl group from acetyl-CoA to various arylamine and hydrazine substrates. This enzyme helps metabolize drugs and other xenobiotics, and functions in folate catabolism. Multiple transcript variants encoding different isoforms have been found for this gene.

## Recommended Dilutions

**WB** 1:500 - 1:1000

**IF/ICC** 1:50 - 1:200

## Immunogen Information

### Gene ID

9

### Swiss Prot

P18440

### Immunogen

A synthetic peptide corresponding to a sequence within amino acids 1-100 of human NAT1 (P18440).

### Synonyms

AAC1; MNAT; NATI; NAT-1; NAT1

## Contact

☎ | 400-999-6126

✉ | [cn.market@abclonal.com.cn](mailto:cn.market@abclonal.com.cn)

🌐 | [www.abclonal.com.cn](http://www.abclonal.com.cn)

## Product Information

### Source

Rabbit

### Isotype

IgG

### Purification

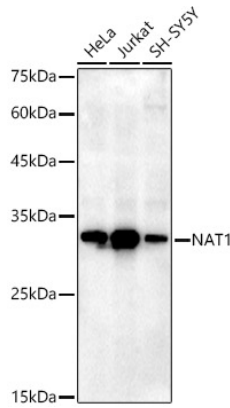
Affinity purification

### Storage

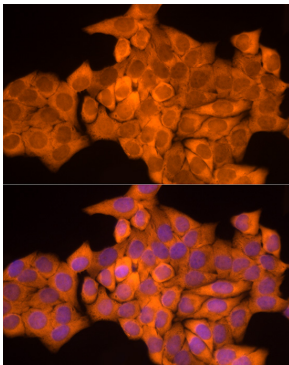
Store at -20°C. Avoid freeze / thaw cycles.

Buffer: PBS with 0.02% sodium azide, 0.05% BSA, 50% glycerol, pH7.3.

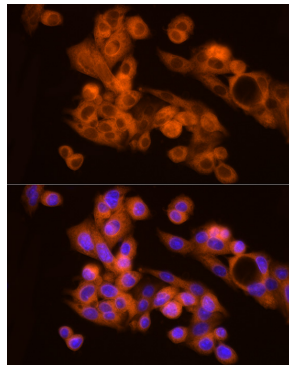
## Validation Data



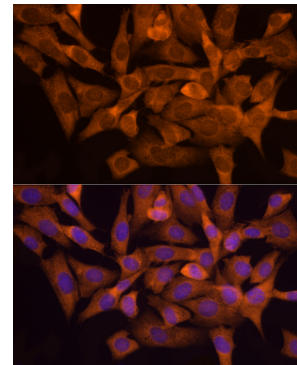
Western blot analysis of extracts of various cell lines, using NAT1 antibody (A20897) at 1:1000 dilution. Secondary antibody: HRP Goat Anti-Rabbit IgG (H+L) (AS014) at 1:10000 dilution. Lysates/proteins: 25µg per lane. Blocking buffer: 3% nonfat dry milk in TBST. Detection: ECL Enhanced Kit (RM00021). Exposure time: 180s.



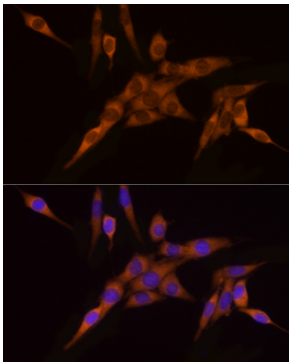
Immunofluorescence analysis of HeLa cells using NAT1 Rabbit mAb (A20897) at dilution of 1:200 (40x lens). Blue: DAPI for nuclear staining.



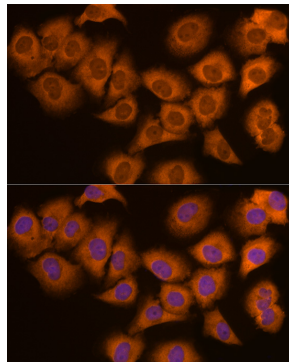
Immunofluorescence analysis of HepG2 cells using NAT1 Rabbit mAb (A20897) at dilution of 1:200 (40x lens). Blue: DAPI for nuclear staining.



Immunofluorescence analysis of NIH/3T3 cells using NAT1 Rabbit mAb (A20897) at dilution of 1:200 (40x lens). Blue: DAPI for nuclear staining.



Immunofluorescence analysis of PC-12 cells using NAT1 Rabbit mAb (A20897) at dilution of 1:200 (40x lens). Blue: DAPI for nuclear staining.



Immunofluorescence analysis of PC-3 cells using NAT1 Rabbit mAb (A20897) at dilution of 1:200 (40x lens). Blue: DAPI for nuclear staining.