

Importin 9 / RANBP9 Rabbit mAb

Catalog No.: A20901 **Recombinant**

Basic Information

Observed MW

116kDa

Calculated MW

116kDa

Category

Primary antibody

Applications

ELISA, WB, IHC-P

Cross-Reactivity

Human, Mouse, Rat

CloneNo number

ARC2864

Background

Enables nuclear import signal receptor activity. Involved in protein import into nucleus. Located in cytoplasm.

Recommended Dilutions

WB 1:500 - 1:1000

IHC-P 1:50 - 1:200

Immunogen Information

Gene ID

55705

Swiss Prot

Q96P70

Immunogen

A synthetic peptide corresponding to a sequence within amino acids 50-150 of human Importin 9 / RANBP9 (Q96P70).

Synonyms

Imp9; Importin 9 / RANBP9

Contact

 | 400-999-6126

 | cn.market@abclonal.com.cn

 | www.abclonal.com.cn

Product Information

Source

Rabbit

Isotype

IgG

Purification

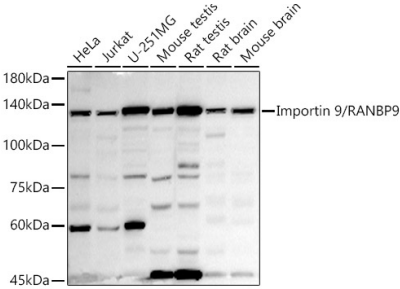
Affinity purification

Storage

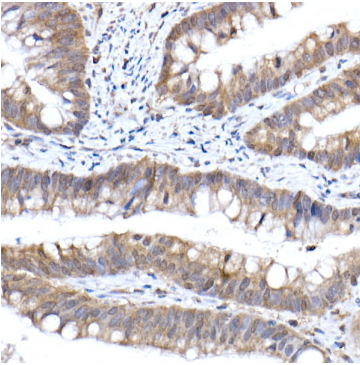
Store at -20°C. Avoid freeze / thaw cycles.

Buffer: PBS with 0.02% sodium azide, 0.05% BSA, 50% glycerol, pH7.3.

Validation Data



Western blot analysis of various lysates using Importin 9 / RANBP9 Rabbit mAb (A20901) at 1:1000 dilution.
Secondary antibody: HRP Goat Anti-Rabbit IgG (H+L) (AS014) at 1:10000 dilution.
Lysates/proteins: 25µg per lane.
Blocking buffer: 3% nonfat dry milk in TBST.
Detection: ECL Basic Kit (RM00020).
Exposure time: 180s.



Immunohistochemistry analysis of paraffin-embedded human colon carcinoma using Importin 9 / RANBP9 Rabbit mAb (A20901) at dilution of 1:200 (40x lens). Perform high pressure antigen retrieval with 10 mM citrate buffer pH 6.0 before commencing with IHC staining protocol.