

MTAP Rabbit mAb

Catalog No.: A20907 **Recombinant**

Basic Information

Observed MW

29kDa

Calculated MW

31kDa

Category

Primary antibody

Applications

ELISA, WB, IHC-P, IF/ICC, IP

Cross-Reactivity

Human, Mouse, Rat

CloneNo number

ARC2872

Background

This gene encodes an enzyme that plays a major role in polyamine metabolism and is important for the salvage pathway of both adenine and methionine. The encoded enzyme is deficient in many cancers. Multiple alternatively spliced transcript variants have been described for this gene.

Recommended Dilutions

WB	1:500 - 1:1000
IHC-P	1:50 - 1:200
IF/ICC	1:50 - 1:200
IP	0.5µg-4µg antibody for 200µg-400µg extracts of whole cells

Immunogen Information

Gene ID

4507

Swiss Prot

Q13126

Immunogen

A synthetic peptide corresponding to a sequence within amino acids 184-283 of human MTAP (Q13126).

Synonyms

BDMF; MSAP; DMSFH; LGMBF; DMSMFH; c86fus; HEL-249; MTAP

Contact

 | 400-999-6126

 | cn.market@abclonal.com.cn

 | www.abclonal.com.cn

Product Information

Source

Rabbit

Isotype

IgG

Purification

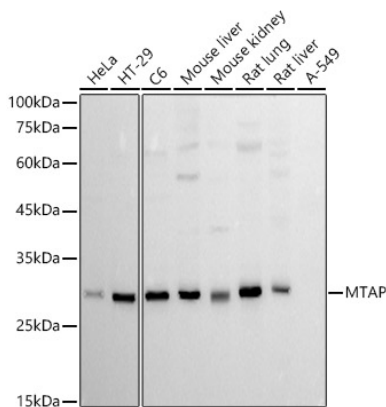
Affinity purification

Storage

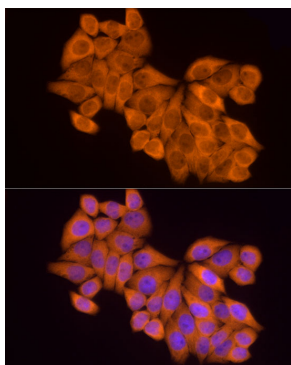
Store at -20°C. Avoid freeze / thaw cycles.

Buffer: PBS with 0.02% sodium azide, 0.05% BSA, 50% glycerol, pH7.3.

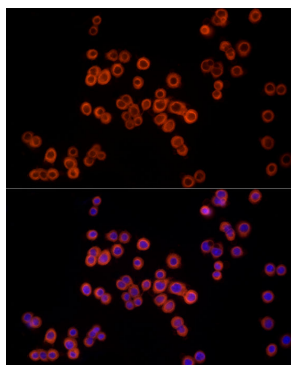
Validation Data



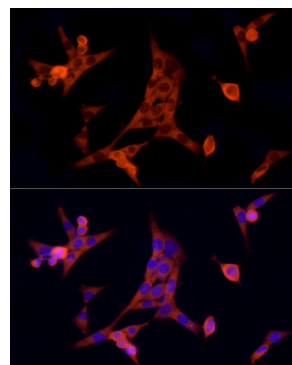
Western blot analysis of various lysates using MTAP Rabbit mAb (A20907) at 1:1000 dilution. Secondary antibody: HRP Goat Anti-Rabbit IgG (H+L) (AS014) at 1:10000 dilution. Lysates/proteins: 25µg per lane. Blocking buffer: 3% nonfat dry milk in TBST. Detection: ECL Basic Kit (RM00020). Exposure time: 30s.



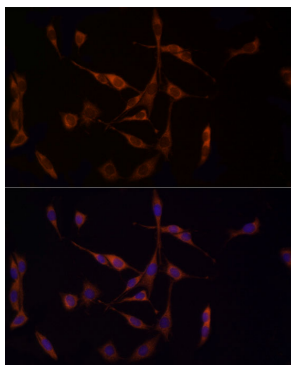
Immunofluorescence analysis of HeLa cells using MTAP Rabbit mAb (A20907) at dilution of 1:100 (40x lens). Secondary antibody: Cy3 Goat Anti-Rabbit IgG (H+L) (AS007) at 1:500 dilution. Blue: DAPI for nuclear staining.



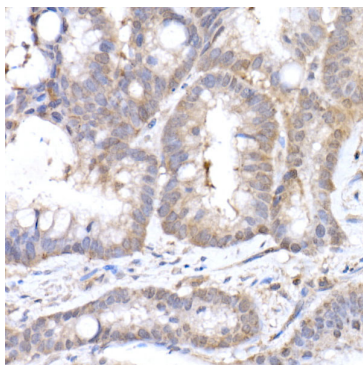
Immunofluorescence analysis of HT-29 cells using MTAP Rabbit mAb (A20907) at dilution of 1:100 (40x lens). Secondary antibody: Cy3 Goat Anti-Rabbit IgG (H+L) (AS007) at 1:500 dilution. Blue: DAPI for nuclear staining.



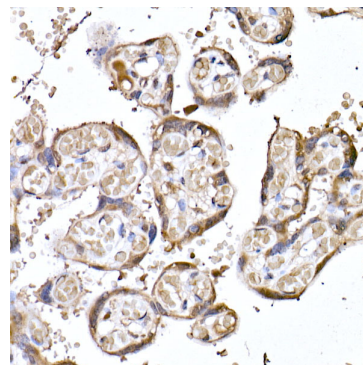
Immunofluorescence analysis of NIH/3T3 cells using MTAP Rabbit mAb (A20907) at dilution of 1:100 (40x lens). Secondary antibody: Cy3 Goat Anti-Rabbit IgG (H+L) (AS007) at 1:500 dilution. Blue: DAPI for nuclear staining.



Immunofluorescence analysis of PC-12 cells using MTAP Rabbit mAb (A20907) at dilution of 1:100 (40x lens). Secondary antibody: Cy3 Goat Anti-Rabbit IgG (H+L) (AS007) at 1:500 dilution. Blue: DAPI for nuclear staining.



Immunohistochemistry analysis of paraffin-embedded human colon carcinoma using MTAP Rabbit mAb (A20907) at dilution of 1:50 (40x lens). Perform high pressure antigen retrieval with 10 mM citrate buffer pH 6.0 before commencing with IHC staining protocol.



Immunohistochemistry analysis of paraffin-embedded human placenta using MTAP Rabbit mAb (A20907) at dilution of 1:50 (40x lens). Perform high pressure antigen retrieval with 10 mM citrate buffer pH 6.0 before commencing with IHC staining protocol.