

Insulin Rabbit pAb

Catalog No.: A2090SP **13 Publications**

Basic Information

Observed MW

10 kDa

Calculated MW

12 kDa

Category

Primary antibody

Applications

WB,IF-P,IHC-P,ELISA

Cross-Reactivity

Human, Mouse, Rat

Background

This gene encodes insulin, a peptide hormone that plays a vital role in the regulation of carbohydrate and lipid metabolism. After removal of the precursor signal peptide, proinsulin is post-translationally cleaved into three peptides: the B chain and A chain peptides, which are covalently linked via two disulfide bonds to form insulin, and C-peptide. Binding of insulin to the insulin receptor (INSR) stimulates glucose uptake. A multitude of mutant alleles with phenotypic effects have been identified, including insulin-dependent diabetes mellitus, permanent neonatal diabetes diabetes mellitus, maturity-onset diabetes of the young type 10 and hyperproinsulinemia. There is a read-through gene, INS-IGF2, which overlaps with this gene at the 5' region and with the IGF2 gene at the 3' region.

Recommended Dilutions

WB 1:1000 - 1:3000

IF-P 1:100 - 1:400

IHC-P 1:40000 - 1:160000

ELISA Recommended starting concentration is 1 µg/mL. Please optimize the concentration based on your specific assay requirements. For high-ratio antibody dilutions ($\geq 1:10000$) a sequential dilution method is strongly recommended to ensure measurement accuracy.

Immunogen Information

Gene ID

3630

Swiss Prot

P01308

Immunogen

This information is considered to be commercially sensitive.

Synonyms

IDDM; ILPR; IRDN; IDDM1; IDDM2; PNDM4; MODY10; Insulin

Product Information

Source

Rabbit

Isotype

IgG

Purification

Affinity purification

Storage

Store at -20°C. Avoid freeze / thaw cycles.

Buffer: PBS, pH 7.3, containing 50% glycerol. Preserved with Proclin300 or sodium azide.

May contain 0.05% BSA as specified on the Certificate of Analysis.

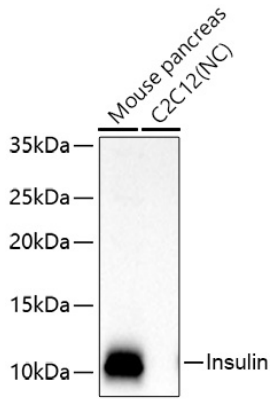
Contact

 | 400-999-6126

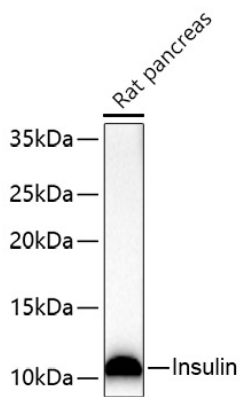
 | cn.market@abclonal.com.cn

 | www.abclonal.com.cn

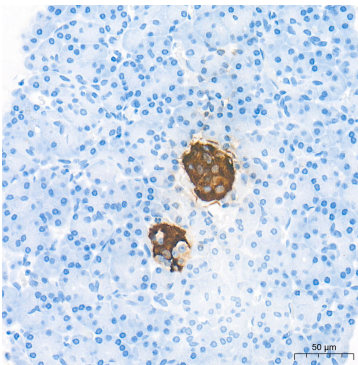
Validation Data



Western blot analysis of various lysates using Insulin Rabbit pAb (A20905P) at 1:2000 dilution incubated at room temperature for 1.5 hours.
Secondary antibody: HRP-conjugated Goat anti-Rabbit IgG (H+L) (AS014) at 1:10000 dilution.
Lysates/proteins: 25 µg per lane.
Blocking buffer: 3% nonfat dry milk in TBST.
Detection: ECL Basic Kit (RM00020).
Negative control (NC): C2C12.
Exposure time: 20 s.



Western blot analysis of lysates from Rat pancreas using Insulin Rabbit pAb (A20905P) at 1:2000 dilution incubated at room temperature for 1.5 hours.
Secondary antibody: HRP-conjugated Goat anti-Rabbit IgG (H+L) (AS014) at 1:10000 dilution.
Lysates/proteins: 25 µg per lane.
Blocking buffer: 3% nonfat dry milk in TBST.
Detection: ECL Basic Kit (RM00020).
Exposure time: 45 s.



Immunohistochemistry analysis of paraffin-embedded Human pancreas tissue using Insulin Rabbit pAb (A20905P) at a dilution of 1:40000 (40x lens). High pressure antigen retrieval performed with 0.01M Tris-EDTA Buffer (pH 9.0) prior to IHC staining.