

PLSCR3 Rabbit mAb

Catalog No.: A20915 **Recombinant**

Basic Information

Observed MW

32kDa

Calculated MW

32kDa

Category

Primary antibody

Applications

ELISA, WB

Cross-Reactivity

Human, Mouse, Rat

CloneNo number

ARC2887

Background

Enables several functions, including calcium-dependent protein binding activity; metal ion binding activity; and phospholipid scramblase activity. Involved in several processes, including cardiolipin biosynthetic process; regulation of apoptotic process; and regulation of release of cytochrome c from mitochondria. Located in cytosol; mitochondrion; and plasma membrane.

Recommended Dilutions

WB 1:500 - 1:1000

Immunogen Information

Gene ID

57048

Swiss Prot

Q9NRY6

Immunogen

A synthetic peptide corresponding to a sequence within amino acids 1-100 of human PLSCR3 (Q9NRY6).

Synonyms

PLSCR3

Contact

☎ | 400-999-6126

✉ | cn.market@abclonal.com.cn

🌐 | www.abclonal.com.cn

Product Information

Source

Rabbit

Isotype

IgG

Purification

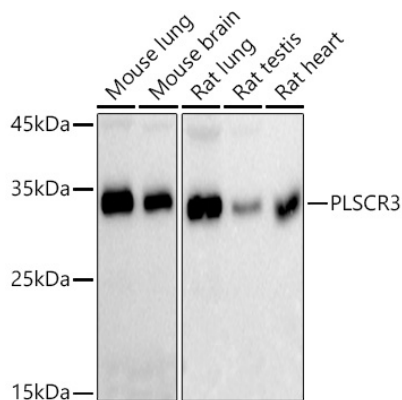
Affinity purification

Storage

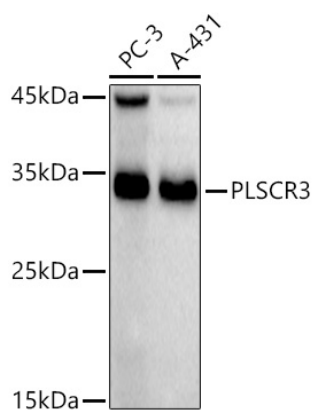
Store at -20°C. Avoid freeze / thaw cycles.

Buffer: PBS with 0.02% sodium azide, 0.05% BSA, 50% glycerol, pH7.3.

Validation Data



Western blot analysis of extracts of various lysates, using PLSCR3 antibody (A20915) at 1:1000 dilution.
Secondary antibody: HRP Goat Anti-Rabbit IgG (H+L) (AS014) at 1:10000 dilution.
Lysates/proteins: 25µg per lane.
Blocking buffer: 3% nonfat dry milk in TBST.
Detection: ECL Basic Kit (RM00020).
Exposure time: 30s.



Western blot analysis of extracts of various cell lines, using PLSCR3 antibody (A20915) at 1:1000 dilution.
Secondary antibody: HRP Goat Anti-Rabbit IgG (H+L) (AS014) at 1:10000 dilution.
Lysates/proteins: 25µg per lane.
Blocking buffer: 3% nonfat dry milk in TBST.
Detection: ECL Basic Kit (RM00020).
Exposure time: 180s.