

# KIF5B Rabbit mAb

Catalog No.: A20928

Recombinant

1 Publications

## Basic Information

### Observed MW

120kDa

### Calculated MW

110kDa

### Category

Primary antibody

### Applications

ELISA, WB, IF/ICC

### Cross-Reactivity

Human, Mouse, Rat

### CloneNo number

ARC2904

## Background

Enables identical protein binding activity; microtubule binding activity; and microtubule motor activity. Involved in several processes, including lysosome localization; natural killer cell mediated cytotoxicity; and positive regulation of protein localization to plasma membrane. Located in centriolar satellite; cytosol; and vesicle.

## Recommended Dilutions

WB 1:1000 - 1:5000

IF/ICC 1:50 - 1:200

## Immunogen Information

### Gene ID

3799

### Swiss Prot

P33176

### Immunogen

A synthetic peptide corresponding to a sequence within amino acids 1-100 of human KIF5B (NP\_004512.1).

### Synonyms

KNS; KINH; KNS1; UKHC; HEL-S-61; KIF5B

## Contact

☎ | 400-999-6126

✉ | [cn.market@abclonal.com.cn](mailto:cn.market@abclonal.com.cn)

🌐 | [www.abclonal.com.cn](http://www.abclonal.com.cn)

## Product Information

### Source

Rabbit

### Isotype

IgG

### Purification

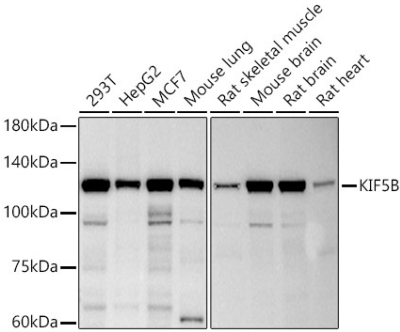
Affinity purification

### Storage

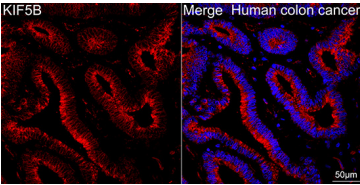
Store at -20°C. Avoid freeze / thaw cycles.

Buffer: PBS with 0.02% sodium azide, 0.05% BSA, 50% glycerol, pH7.3.

## Validation Data



Western blot analysis of various lysates using KIF5B Rabbit mAb (A20928) at 1:500 dilution.  
Secondary antibody: HRP Goat Anti-Rabbit IgG (H+L) (AS014) at 1:10000 dilution.  
Lysates/proteins: 25µg per lane.  
Blocking buffer: 3% nonfat dry milk in TBST.  
Detection: ECL Basic Kit (RM00020).  
Exposure time: 3s.



Confocal imaging of paraffin-embedded Human colon cancer tissue using KIF5B Rabbit mAb (A20928, dilution 1:100) followed by a further incubation with Cy3 Goat Anti-Rabbit IgG (H+L) (AS007, dilution 1:500) (Red). DAPI was used for nuclear staining (Blue). Objective: 40x. Perform high pressure antigen retrieval with 0.01 M citrate buffer (pH 6.0) prior to IF staining.