

Lipocalin-2/NGAL Rabbit pAb

Catalog No.: A2092SP **27 Publications**

Basic Information

Observed MW

22 kDa

Calculated MW

23 kDa

Category

Primary antibody

Applications

WB,IF-P,IHC-P,ELISA

Cross-Reactivity

Human

Background

This gene encodes a protein that belongs to the lipocalin family. Members of this family transport small hydrophobic molecules such as lipids, steroid hormones and retinoids. The protein encoded by this gene is a neutrophil gelatinase-associated lipocalin and plays a role in innate immunity by limiting bacterial growth as a result of sequestering iron-containing siderophores. The presence of this protein in blood and urine is an early biomarker of acute kidney injury. This protein is thought to be involved in multiple cellular processes, including maintenance of skin homeostasis, and suppression of invasiveness and metastasis. Mice lacking this gene are more susceptible to bacterial infection than wild type mice.

Recommended Dilutions

WB 1:5000 - 1:20000

IF-P 1:200 -1:400

IHC-P 1:1000 - 1:4000

ELISA Recommended starting concentration is 1 µg/mL. Please optimize the concentration based on your specific assay requirements. For high-ratio antibody dilutions (≥1:10000) a sequential dilution method is strongly recommended to ensure measurement accuracy.

Immunogen Information

Gene ID

3934

Swiss Prot

P80188

Immunogen

This information is considered to be commercially sensitive.

Synonyms

p25; 24p3; MSFI; NGAL; Lipocalin-2/NGAL

Product Information

Source

Rabbit

Isotype

IgG

Purification

Affinity purification

Storage

Store at -20°C. Avoid freeze / thaw cycles.

Buffer: PBS, pH 7.3, containing 50% glycerol. Preserved with Proclin300 or sodium azide.

May contain 0.05% BSA as specified on the Certificate of Analysis.

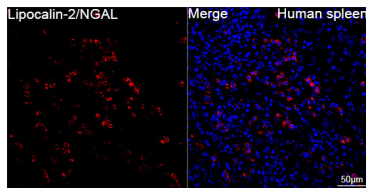
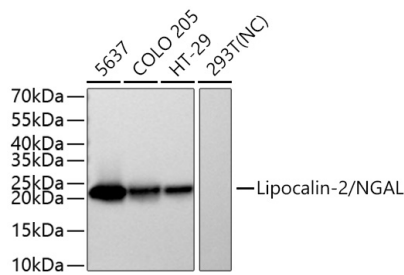
Contact

 | 400-999-6126

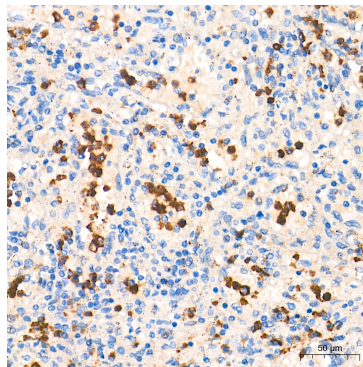
 | cn.market@abclonal.com.cn

 | www.abclonal.com.cn

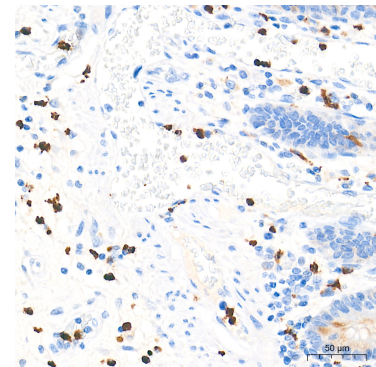
Validation Data



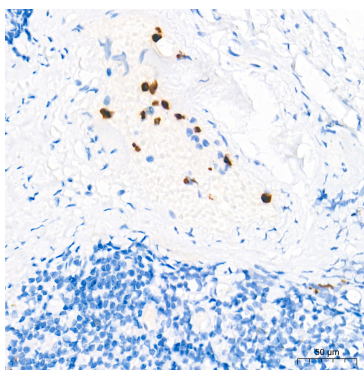
Confocal imaging of paraffin-embedded Human spleen tissue using Lipocalin-2/NGAL Rabbit pAb (A2092SP, dilution 1:200) followed by a further incubation with Cy3-conjugated Goat anti-Rabbit IgG (H+L) (AS007, dilution 1:500) (Red). DAPI was used for nuclear staining (Blue). High pressure antigen retrieval performed with 0.01M Citrate Buffer (pH 6.0) prior to IF staining. Objective: 40x.



Immunohistochemistry analysis of paraffin-embedded Human spleen tissue using Lipocalin-2/NGAL Rabbit pAb (A2092SP) at a dilution of 1:2000 (40x lens). High pressure antigen retrieval performed with 0.01M Tris-EDTA Buffer (pH 9.0) prior to IHC staining.



Immunohistochemistry analysis of paraffin-embedded Human colon tissue using Lipocalin-2/NGAL Rabbit pAb (A2092SP) at a dilution of 1:2000 (40x lens). High pressure antigen retrieval performed with 0.01M Tris-EDTA Buffer (pH 9.0) prior to IHC staining.



Immunohistochemistry analysis of paraffin-embedded Human tonsil tissue using Lipocalin-2/NGAL Rabbit pAb (A2092SP) at a dilution of 1:2000 (40x lens). High pressure antigen retrieval performed with 0.01M Tris-EDTA Buffer (pH 9.0) prior to IHC staining.