

# Glyt2 Rabbit mAb

Catalog No.: A20931 **Recombinant**

## Basic Information

### Observed MW

87kDa

### Calculated MW

87kDa

### Category

Primary antibody

### Applications

ELISA, WB

### Cross-Reactivity

Human, Mouse, Rat

### CloneNo number

ARC2912

## Background

This gene encodes a sodium- and chloride-dependent glycine neurotransmitter transporter. This integral membrane glycoprotein is responsible for the clearance of extracellular glycine during glycine-mediated neurotransmission. This protein is found in glycinergic axons and maintains a high presynaptic pool of neurotransmitter at glycinergic synapses. Mutations in this gene cause hyperekplexia; a heterogenous neurological disorder characterized by exaggerated startle responses and neonatal apnea. Two transcript variants encoding different isoforms have been found for this gene.

## Recommended Dilutions

**WB** 1:500 - 1:1000

## Immunogen Information

### Gene ID

9152

### Swiss Prot

Q9Y345

### Immunogen

A synthetic peptide corresponding to a sequence within amino acids 250-350 of human Glyt2 (Q9Y345).

### Synonyms

NET1; GLYT2; HKPX3; GLYT-2; Glyt2

## Contact

 | 400-999-6126

 | [cn.market@abclonal.com.cn](mailto:cn.market@abclonal.com.cn)

 | [www.abclonal.com.cn](http://www.abclonal.com.cn)

## Product Information

### Source

Rabbit

### Isotype

IgG

### Purification

Affinity purification

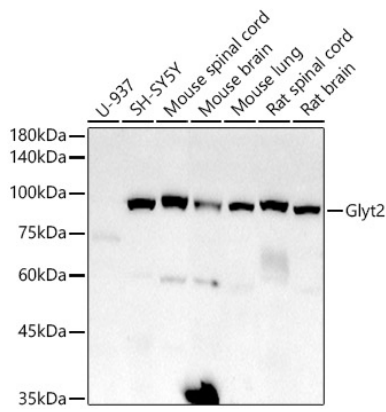
### Storage

Store at -20°C. Avoid freeze / thaw cycles.

Buffer: PBS with 0.02% sodium azide, 0.05% BSA, 50% glycerol, pH7.3.

## Validation Data

---



Western blot analysis of extracts of various cell lines, using Glyt2 antibody (A20931) at 1:1000 dilution.  
Secondary antibody: HRP Goat Anti-Rabbit IgG (H+L) (AS014) at 1:10000 dilution.  
Lysates/proteins: 25µg per lane.  
Blocking buffer: 3% nonfat dry milk in TBST.  
Detection: ECL Basic Kit (RM00020).  
Exposure time: 180s.