

KCTD9 Rabbit mAb

Catalog No.: A20967 **Recombinant** **1 Publications**

Basic Information

Observed MW

45 kDa

Calculated MW

43 kDa

Category

Primary antibody

Applications

WB, ELISA

Cross-Reactivity

Human

CloneNo number

ARC2956

Background

Enables cullin family protein binding activity; identical protein binding activity; and protein self-association. Predicted to be involved in intracellular signal transduction; protein homooligomerization; and protein ubiquitination.

Recommended Dilutions

WB 1:500 - 1:1000

ELISA Recommended starting concentration is 1 µg/mL. Please optimize the concentration based on your specific assay requirements.

Immunogen Information

Gene ID

54793

Swiss Prot

Q7L273

Immunogen

Synthetic peptide. This information is considered to be commercially sensitive.

Synonyms

BTBD27; KCTD9

Contact

 | 400-999-6126

 | cn.market@abclonal.com.cn

 | www.abclonal.com.cn

Product Information

Source

Rabbit

Isotype

IgG

Purification

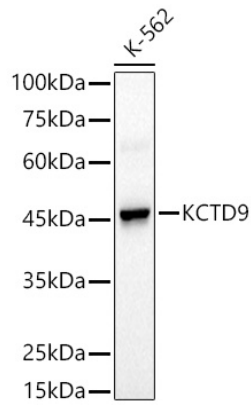
Affinity purification

Storage

Store at -20°C. Avoid freeze / thaw cycles.

Buffer: PBS containing 50% glycerol and 0.05% BSA, preserved with proclin300 or sodium azide (as specified on the Certificate of Analysis), pH 7.3.

Validation Data



Western blot analysis of various lysates using KCTD9 Rabbit mAb (A20967) at 1:500 dilution.
Secondary antibody: HRP-conjugated Goat anti-Rabbit IgG (H+L) (AS014) at 1:10000 dilution.
Lysates/proteins: 25µg per lane.
Blocking buffer: 3% nonfat dry milk in TBST.
Detection: ECL Basic Kit (RM00020).
Exposure time: 30s.