

PRPF31 Rabbit mAb

Catalog No.: A20979 **Recombinant**

Basic Information

Observed MW

60kDa

Calculated MW

55kDa

Category

Primary antibody

Applications

ELISA, WB

Cross-Reactivity

Human

CloneNo number

ARC2971

Background

This gene encodes a component of the spliceosome complex and is one of several retinitis pigmentosa-causing genes. When the gene product is added to the spliceosome complex, activation occurs.

Recommended Dilutions

WB 1:500 - 1:1000

Immunogen Information

Gene ID

26121

Swiss Prot

Q8WWY3

Immunogen

A synthetic peptide corresponding to a sequence within amino acids 350-450 of human PRPF31 (Q8WWY3).

Synonyms

RP11; PRP31; SNRNP61; NY-BR-99; PRPF31

Contact

☎ | 400-999-6126

✉ | cn.market@abclonal.com.cn

🌐 | www.abclonal.com.cn

Product Information

Source

Rabbit

Isotype

IgG

Purification

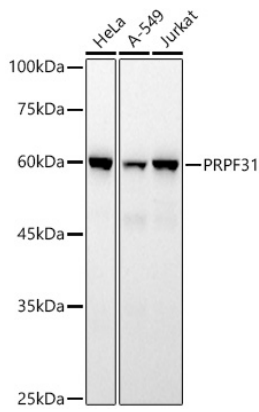
Affinity purification

Storage

Store at -20°C. Avoid freeze / thaw cycles.

Buffer: PBS with 0.02% sodium azide, 0.05% BSA, 50% glycerol, pH7.3.

Validation Data



Western blot analysis of extracts of various cell lines, using PRPF31 antibody (A20979) at 1:1000 dilution.
Secondary antibody: HRP Goat Anti-Rabbit IgG (H+L) (AS014) at 1:10000 dilution.
Lysates/proteins: 25µg per lane.
Blocking buffer: 3% nonfat dry milk in TBST.
Detection: ECL Basic Kit (RM00020).
Exposure time: 60s.