

# PKM2-specific Rabbit mAb

Catalog No.: A20991

Recombinant

7 Publications

## Basic Information

**Observed MW**

58kDa

**Calculated MW**

58kDa

**Category**

Primary antibody

**Applications**

WB, IF/ICC, IP, ELISA

**Cross-Reactivity**

Human, Mouse, Rat

**CloneNo number**

ARC50919

## Background

This gene encodes a protein involved in glycolysis. The encoded protein is a pyruvate kinase that catalyzes the transfer of a phosphoryl group from phosphoenolpyruvate to ADP, generating ATP and pyruvate. This protein has been shown to interact with thyroid hormone and may mediate cellular metabolic effects induced by thyroid hormones. This protein has been found to bind Opa protein, a bacterial outer membrane protein involved in gonococcal adherence to and invasion of human cells, suggesting a role of this protein in bacterial pathogenesis. Several alternatively spliced transcript variants encoding a few distinct isoforms have been reported.

## Recommended Dilutions

**WB** 1:1000 - 1:6000**IF/ICC** 1:200 - 1:800**IP** 0.5µg-4µg antibody for  
200µg-400µg extracts of  
whole cells**ELISA** Recommended starting  
concentration is 1 µg/mL.  
Please optimize the  
concentration based on  
your specific assay  
requirements.

## Contact

 | 400-999-6126 | [cn.market@abclonal.com.cn](mailto:cn.market@abclonal.com.cn) | [www.abclonal.com.cn](http://www.abclonal.com.cn)

## Immunogen Information

**Gene ID**

5315

**Swiss Prot**

P14618

**Immunogen**

Synthetic peptide. This information is considered to be commercially sensitive.

**Synonyms**

PK3; TCB; p58; OIP3; PKM2; CTHBP; THBP1; HEL-S-30; PKM2-specific

## Product Information

**Source**

Rabbit

**Isotype**

IgG

**Purification**

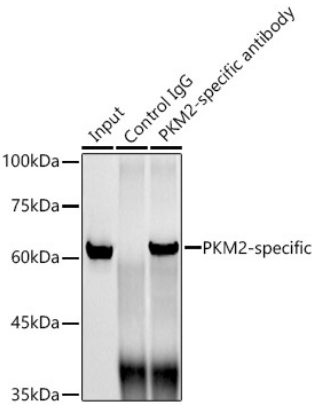
Affinity purification

**Storage**

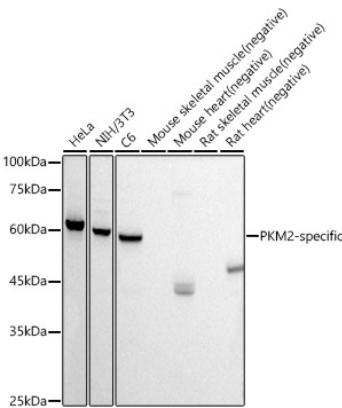
Store at -20°C. Avoid freeze / thaw cycles.

Buffer: PBS containing 50% glycerol and 0.05% BSA, preserved with proclin300 or sodium azide (as specified on the Certificate of Analysis), pH 7.3.

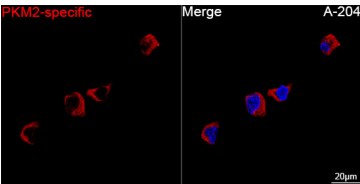
Validation Data



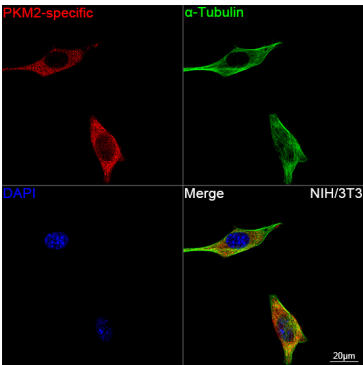
Immunoprecipitation analysis of 300 µg extracts from HeLa cells using 3 µg PKM2-specific Rabbit mAb (A20991). Western blot was performed from the immunoprecipitate using PKM2-specific Rabbit mAb (A20991) at a dilution of 1:1000.



Western blot analysis of various lysates, using PKM2-specific Rabbit mAb (A20991) at 1:1000 dilution. Secondary antibody: HRP-conjugated Goat anti-Rabbit IgG (H+L) (AS014) at 1:10000 dilution. Lysates/proteins: 25µg per lane. Blocking buffer: 3% nonfat dry milk in TBST. Detection: ECL Basic Kit (RM00020). Negative control (NC): Mouse skeletal muscle,Rat skeletal muscle,Mouse heart,Rat heart. Exposure time: 3s.



Confocal imaging of A-204 cells using PKM2-specific Rabbit mAb (A20991, dilution 1:200) followed by a further incubation with Cy3 Goat Anti-Rabbit IgG (H+L) (AS007, dilution 1:500) (Red). DAPI was used for nuclear staining (Blue). Objective: 100x.



Confocal imaging of NIH/3T3 cells using PKM2-specific Rabbit mAb (A20991, dilution 1:400) followed by a further incubation with Cy3-conjugated Goat anti-Rabbit IgG (H+L) (AS007, dilution 1:500) (Red). The cells were counterstained with α-Tubulin Mouse mAb (AC012, dilution 1:400) followed by incubation with ABflo® 488-conjugated Goat Anti-Mouse IgG (H+L) Ab (AS076, dilution 1:500) (Green). DAPI was used for nuclear staining (Blue). Objective: 100x.