

# PGC1 $\alpha$ Rabbit mAb

Catalog No.: A20995

Recombinant

13 Publications

## Basic Information

### Observed MW

100kDa

### Calculated MW

91kDa

### Category

Primary antibody

### Applications

WB,IHC-P,ELISA

### Cross-Reactivity

Human, Mouse, Rat

### CloneNo number

ARC51988

## Background

The protein encoded by this gene is a transcriptional coactivator that regulates the genes involved in energy metabolism. This protein interacts with PPARgamma, which permits the interaction of this protein with multiple transcription factors. This protein can interact with, and regulate the activities of, cAMP response element binding protein (CREB) and nuclear respiratory factors (NRFs). It provides a direct link between external physiological stimuli and the regulation of mitochondrial biogenesis, and is a major factor that regulates muscle fiber type determination. This protein may be also involved in controlling blood pressure, regulating cellular cholesterol homeostasis, and the development of obesity.

## Recommended Dilutions

|           |                 |
|-----------|-----------------|
| <b>WB</b> | 1:1000 - 1:4000 |
|-----------|-----------------|

|              |                |
|--------------|----------------|
| <b>IHC-P</b> | 1:400 - 1:4000 |
|--------------|----------------|

|              |  |
|--------------|--|
| <b>ELISA</b> | Recommended starting concentration is 1 $\mu$ g/mL. Please optimize the concentration based on your specific assay requirements. |
|--------------|--|

## Immunogen Information

### Gene ID

10891

### Swiss Prot

Q9UBK2

### Immunogen

Recombinant fusion protein containing a sequence corresponding to amino acids 340-480 of human PGC1 $\alpha$  (NP\_037393.1).

### Synonyms

LEM6; PGC1; PGC1A; PGC-1v; PPARGC1; PGC-1alpha; PGC-1(alpha); PGC1 $\alpha$ 

## Contact

|  |  |              |
|--|--|--------------|
|  |  | 400-999-6126 |
|--|--|--------------|

|  |  |                           |
|--|--|---------------------------|
|  |  | cn.market@abclonal.com.cn |
|--|--|---------------------------|

|  |  |  |
|--|--|--|
|  |  | <a href="http://www.abclonal.com.cn">www.abclonal.com.cn</a> |
|--|--|--|

## Product Information

### Source

Rabbit

### Isotype

IgG

### Purification

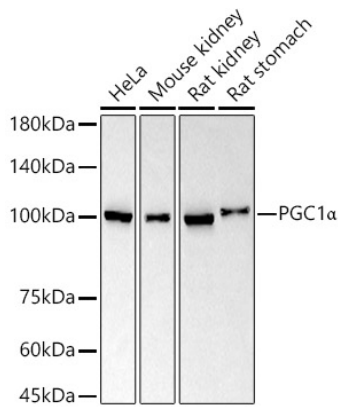
Affinity purification

### Storage

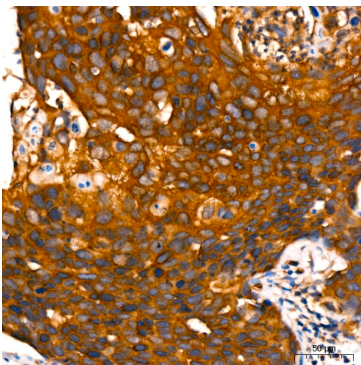
Store at -20°C. Avoid freeze / thaw cycles.

Buffer: PBS with 0.05% proclin300,0.05% BSA,50% glycerol,pH7.3.

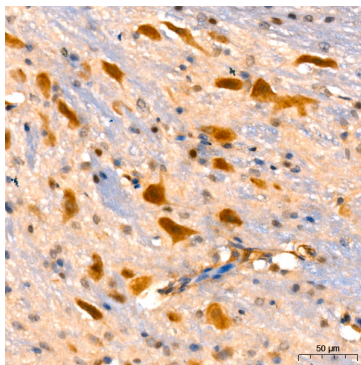
## Validation Data



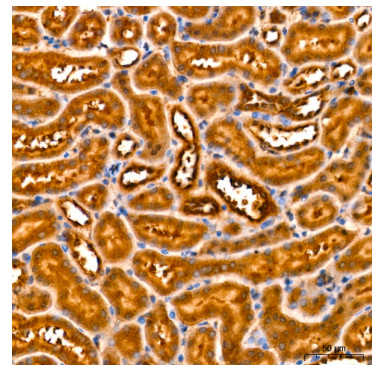
Western blot analysis of various lysates using PGC1 $\alpha$  Rabbit mAb (A20995) at 1:1000 dilution. Secondary antibody: HRP-conjugated Goat anti-Rabbit IgG (H+L) (AS014) at 1:10000 dilution. Lysates/proteins: 25 $\mu$ g per lane. Blocking buffer: 3% nonfat dry milk in TBST. Detection: ECL Basic Kit (RM00020). Exposure time: 30s.



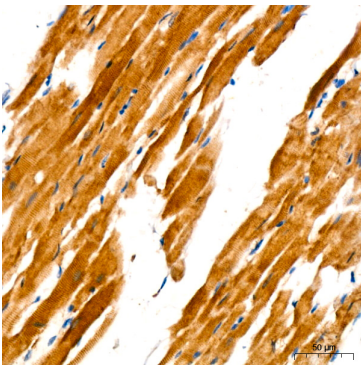
Immunohistochemistry analysis of paraffin-embedded Human cervix cancer using PGC1 $\alpha$  Rabbit mAb (A20995) at dilution of 1:200 (40x lens). High pressure antigen retrieval performed with 0.01M Citrate Bufferr (pH 6.0) prior to IHC staining.



Immunohistochemistry analysis of paraffin-embedded Mouse brain using PGC1 $\alpha$  Rabbit mAb (A20995) at dilution of 1:200 (40x lens). High pressure antigen retrieval performed with 0.01M Citrate Bufferr (pH 6.0) prior to IHC staining.



Immunohistochemistry analysis of paraffin-embedded Mouse kidney using PGC1 $\alpha$  Rabbit mAb (A20995) at dilution of 1:200 (40x lens). High pressure antigen retrieval performed with 0.01M Citrate Bufferr (pH 6.0) prior to IHC staining.



Immunohistochemistry analysis of paraffin-embedded Rat heart using PGC1 $\alpha$  Rabbit mAb (A20995) at dilution of 1:200 (40x lens). High pressure antigen retrieval performed with 0.01M Citrate Bufferr (pH 6.0) prior to IHC staining.