

Phospho-Chk1-S345 Rabbit mAb

Catalog No.: A21009 **Recombinant**

Basic Information

Observed MW

56kDa

Calculated MW

54kDa

Category

Primary antibody

Applications

ELISA, WB

Cross-Reactivity

Human, Mouse

CloneNo number

ARC56803

Background

The protein encoded by this gene belongs to the Ser/Thr protein kinase family. It is required for checkpoint mediated cell cycle arrest in response to DNA damage or the presence of unreplicated DNA. This protein acts to integrate signals from ATM and ATR, two cell cycle proteins involved in DNA damage responses, that also associate with chromatin in meiotic prophase I. Phosphorylation of CDC25A protein phosphatase by this protein is required for cells to delay cell cycle progression in response to double-strand DNA breaks. Several alternatively spliced transcript variants have been found for this gene.

Recommended Dilutions

WB 1:1000 - 1:5000

Immunogen Information

Gene ID

1111

Swiss Prot

O14757

Immunogen

A synthetic phosphorylated peptide around S345 of human Phospho-Chk1-S345 (NP_001107593.1).

Synonyms

CHK1; Phospho-Chk1-S345

Contact

☎ | 400-999-6126

✉ | cn.market@abclonal.com.cn

🌐 | www.abclonal.com.cn

Product Information

Source

Rabbit

Isotype

IgG

Purification

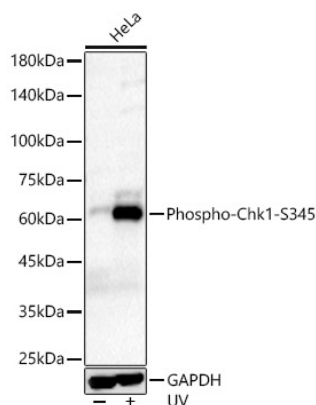
Affinity purification

Storage

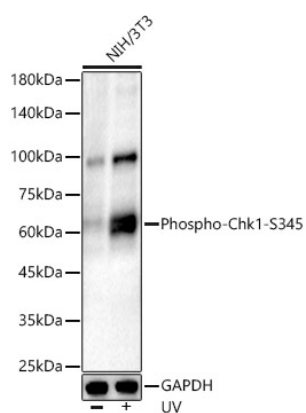
Store at -20°C. Avoid freeze / thaw cycles.

Buffer: PBS with 0.05% proclin300, 0.05% BSA, 50% glycerol, pH7.3.

Validation Data



Western blot analysis of lysates from HeLa cells, using Phospho-Chk1-S345 Rabbit mAb (A21009) at 1:2000 dilution. HeLa cells were treated by UV at room temperature for 15-30 minutes.
Secondary antibody: HRP Goat Anti-Rabbit IgG (H+L) (AS014) at 1:10000 dilution.
Lysates/proteins: 25µg per lane.
Blocking buffer: 3% nonfat dry milk in TBST.
Detection: ECL Basic Kit (RM00020).
Exposure time: 180s.



Western blot analysis of lysates from NIH/3T3 cells, using Phospho-Chk1-S345 Rabbit mAb (A21009) at 1:2000 dilution. NIH/3T3 cells were treated by UV at room temperature for 15-30 minutes.
Secondary antibody: HRP Goat Anti-Rabbit IgG (H+L) (AS014) at 1:10000 dilution.
Lysates/proteins: 25µg per lane.
Blocking buffer: 3% nonfat dry milk in TBST.
Detection: ECL Basic Kit (RM00020).
Exposure time: 180s.