

CD31/PECAM1 Rabbit pAb

Catalog No.: A2104 **16 Publications**

Basic Information

Observed MW

130kDa/110-135kDa

Calculated MW

83kDa

Category

Primary antibody

Applications

WB,IF/ICC,ELISA

Cross-Reactivity

Human, Mouse, Rat

Background

The protein encoded by this gene is found on the surface of platelets, monocytes, neutrophils, and some types of T-cells, and makes up a large portion of endothelial cell intercellular junctions. The encoded protein is a member of the immunoglobulin superfamily and is likely involved in leukocyte migration, angiogenesis, and integrin activation.

Recommended Dilutions

WB 1:500 - 1:1000

IF/ICC 1:50 - 1:200

ELISA Recommended starting concentration is 1 µg/mL. Please optimize the concentration based on your specific assay requirements.

Immunogen Information

Gene ID

5175

Swiss Prot

P16284

Immunogen

Recombinant fusion protein containing a sequence corresponding to amino acids 630-738 of CD31/PECAM1 (NP_000433.4).

Synonyms

CD31; PECA1; GPIIA'; PECAM-1; endoCAM; CD31/EndoCAM; CD31/PECAM1

Contact

 | 400-999-6126

 | cn.market@abclonal.com.cn

 | www.abclonal.com.cn

Product Information

Source

Rabbit

Isotype

IgG

Purification

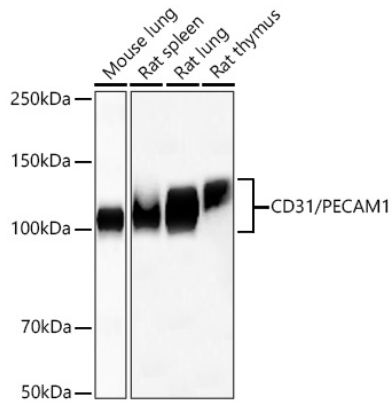
Affinity purification

Storage

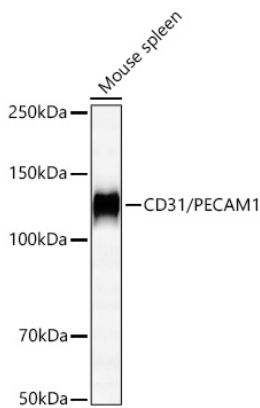
Store at -20°C. Avoid freeze / thaw cycles.

Buffer: PBS with 0.02% sodium azide,50% glycerol,pH7.3.

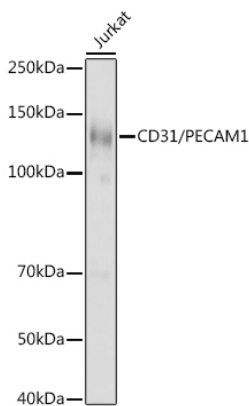
Validation Data



Western blot analysis of various lysates using CD31/PECAM1 Rabbit pAb (A2104) at 1:3000 dilution incubated overnight at 4°C.
Secondary antibody: HRP-conjugated Goat anti-Rabbit IgG (H+L) (AS014) at 1:10000 dilution.
Lysates/proteins: 25 µg per lane.
Blocking buffer: 3% nonfat dry milk in TBST.
Detection: ECL Basic Kit (RM00020).
Exposure time: 30s.

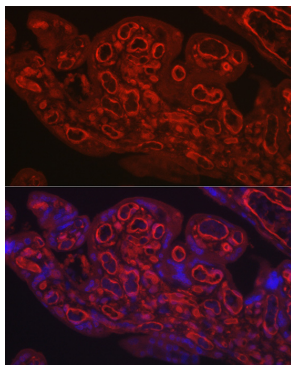


Western blot analysis of lysates from Mouse spleen using CD31/PECAM1 Rabbit pAb (A2104) at 1:3000 dilution incubated overnight at 4°C.
Secondary antibody: HRP-conjugated Goat anti-Rabbit IgG (H+L) (AS014) at 1:10000 dilution.
Lysates/proteins: 25 µg per lane.
Blocking buffer: 3% nonfat dry milk in TBST.
Detection: ECL Basic Kit (RM00020).
Exposure time: 90s.



Western blot analysis of lysates from Jurkat cells, using CD31/PECAM1 Rabbit pAb (A2104) at 1:1000 dilution.
Secondary antibody: HRP-conjugated Goat anti-Rabbit IgG (H+L) (AS014) at 1:10000 dilution.
Lysates/proteins: 25µg per lane.
Blocking buffer: 3% nonfat dry milk in TBST.
Detection: ECL Basic Kit (RM00020).
Exposure time: 1s.

Validation Data



Immunofluorescence analysis of paraffin-embedded human placenta using CD31/PECAM1 Rabbit pAb (A2104) at dilution of 1:200 (40x lens). Secondary antibody: Cy3-conjugated Goat anti-Rabbit IgG (H+L) (AS007) at 1:500 dilution. Blue: DAPI for nuclear staining.