

# STOP1 Rabbit pAb

Catalog No.: A21044

## Basic Information

### Observed MW

55kDa

### Calculated MW

55kDa

### Category

Primary antibody

### Applications

ELISA, WB

### Cross-Reactivity

Arabidopsis thaliana

## Background

Encodes a putative nuclear Cys(2)His(2)-type zinc finger protein involved in H<sup>+</sup> and Al<sup>3+</sup> rhizotoxicity. In mutants exposed to aluminum stress, there is no induction of AtALMT1, an malate transporter known to be involved in the mediation of aluminum toxicity. Cell wall of the mutant is unstable in low pH medium (pH 4.5) in low Ca solution. This would mediate Ca-alleviation of low pH stress through pectin-Ca interaction.

## Recommended Dilutions

WB 1:100 - 1:500

## Immunogen Information

### Gene ID

840339

### Swiss Prot

Q9C8N5

### Immunogen

Recombinant fusion protein containing a sequence corresponding to amino acids 55-180 of arabidopsis thaliana STOP1 (NP\_174697.1).

### Synonyms

AtSTOP1; F7P12.7; F7P12\_7; sensitive to proton rhizotoxicity 1; STOP1

## Contact

☎ | 400-999-6126

✉ | [cn.market@abclonal.com.cn](mailto:cn.market@abclonal.com.cn)

🌐 | [www.abclonal.com.cn](http://www.abclonal.com.cn)

## Product Information

### Source

Rabbit

### Isotype

IgG

### Purification

Affinity purification

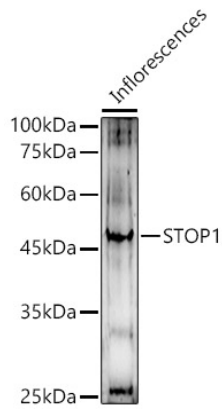
### Storage

Store at -20°C. Avoid freeze / thaw cycles.

Buffer: PBS with 0.05% proclin300, 50% glycerol, pH7.3.

## Validation Data

---



Western blot analysis of lysates from Inflorescences, using STOP1 Rabbit pAb (A21044) at 1:500 dilution.  
Secondary antibody: HRP Goat Anti-Rabbit IgG (H+L) (AS014) at 1:10000 dilution.  
Lysates/proteins: 25µg per lane.  
Blocking buffer: 3% nonfat dry milk in TBST.  
Detection: ECL Enhanced Kit (RM00021).  
Exposure time: 180s.