

# von Willebrand factor (VWF) Rabbit mAb

Catalog No.: A21054 **Recombinant**

## Basic Information

### Observed MW

Refer to figures

### Calculated MW

309kDa

### Category

Primary antibody

### Applications

IHC-P,ELISA

### Cross-Reactivity

Human, Mouse

### CloneNo number

ARC52173

## Background

This gene encodes a glycoprotein involved in hemostasis. The encoded preproprotein is proteolytically processed following assembly into large multimeric complexes. These complexes function in the adhesion of platelets to sites of vascular injury and the transport of various proteins in the blood. Mutations in this gene result in von Willebrand disease, an inherited bleeding disorder. An unprocessed pseudogene has been found on chromosome 22.

## Recommended Dilutions

**IHC-P** 1:1000 - 1:4000

**ELISA** Recommended starting concentration is 1 µg/mL. Please optimize the concentration based on your specific assay requirements.

## Immunogen Information

### Gene ID

7450

### Swiss Prot

P04275

### Immunogen

Recombinant protein (or fragment). This information is considered to be commercially sensitive.

### Synonyms

VWD; F8VWF; von Willebrand factor (VWF)

## Contact

☎ | 400-999-6126

✉ | [cn.market@abclonal.com.cn](mailto:cn.market@abclonal.com.cn)

🌐 | [www.abclonal.com.cn](http://www.abclonal.com.cn)

## Product Information

### Source

Rabbit

### Isotype

IgG

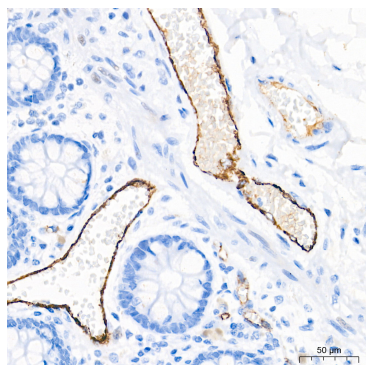
### Purification

Affinity purification

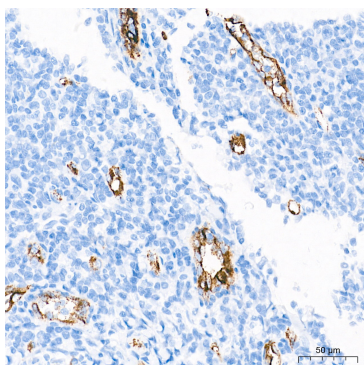
### Storage

Store at -20°C. Avoid freeze / thaw cycles.

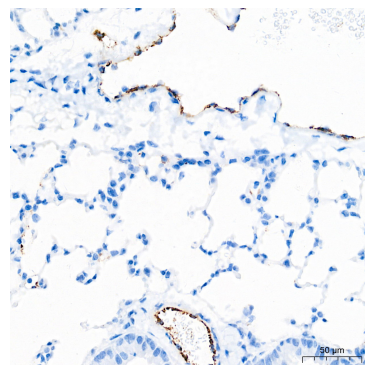
Buffer: PBS with 0.09% Sodium azide, 0.05% BSA, 50% glycerol, pH7.3.



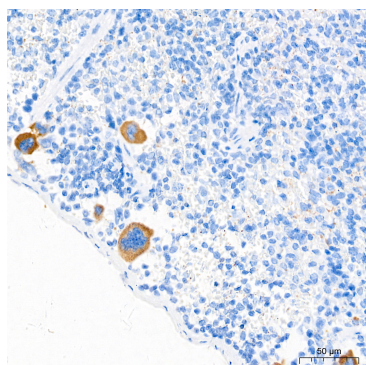
Immunohistochemistry analysis of paraffin-embedded Human colon tissue using von Willebrand factor (VWF) Rabbit mAb (A21054) at a dilution of 1:600 (40x lens). High pressure antigen retrieval performed with 0.01M Tris-EDTA Buffer (pH 9.0) prior to IHC staining.



Immunohistochemistry analysis of paraffin-embedded Human tonsil tissue using von Willebrand factor (VWF) Rabbit mAb (A21054) at a dilution of 1:600 (40x lens). High pressure antigen retrieval performed with 0.01M Tris-EDTA Buffer (pH 9.0) prior to IHC staining.



Immunohistochemistry analysis of paraffin-embedded Mouse lung tissue using von Willebrand factor (VWF) Rabbit mAb (A21054) at a dilution of 1:600 (40x lens). High pressure antigen retrieval performed with 0.01M Tris-EDTA Buffer (pH 9.0) prior to IHC staining.



Immunohistochemistry analysis of paraffin-embedded Mouse spleen tissue using von Willebrand factor (VWF) Rabbit mAb (A21054) at a dilution of 1:600 (40x lens). High pressure antigen retrieval performed with 0.01M Tris-EDTA Buffer (pH 9.0) prior to IHC staining.