

CD32A + CD32B + CD32C Rabbit mAb

Catalog No.: A21073 **Recombinant**

Basic Information

Observed MW

25-50kDa

Calculated MW

35kDa/34kDa

Category

Primary antibody

Applications

ELISA, WB, IHC-P

Cross-Reactivity

Human

CloneNo number

ARC2905

Background

This gene encodes one member of a family of immunoglobulin Fc receptor genes found on the surface of many immune response cells. The protein encoded by this gene is a cell surface receptor found on phagocytic cells such as macrophages and neutrophils, and is involved in the process of phagocytosis and clearing of immune complexes. Alternative splicing results in multiple transcript variants.

Recommended Dilutions

WB	1:500 - 1:1000
IHC-P	1:50 - 1:200

Immunogen Information

Gene ID

2212/2213/9103

Swiss Prot

P12318/P31994/P31995

Immunogen

Recombinant fusion protein containing a sequence corresponding to amino acids 1-100 of human CD32A/CD32B/CD32C (NP_001129691.1/NP_001381406.1/NP_963857.3).

Synonyms

CD32; FCG2; FcGR; CD32A; CDw32; FCGR2; IGFR2; FCGR2A1; FcgammaRIIa; CD32A + CD32B + CD32C

Contact

☎ | 400-999-6126

✉ | cn.market@abclonal.com.cn

🌐 | www.abclonal.com.cn

Product Information

Source

Rabbit

Isotype

IgG

Purification

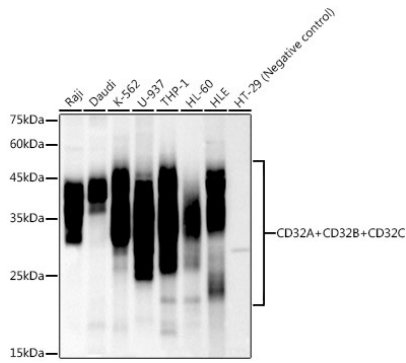
Affinity purification

Storage

Store at -20°C. Avoid freeze / thaw cycles.

Buffer: PBS with 0.02% sodium azide, 0.05% BSA, 50% glycerol, pH7.3.

Validation Data



Western blot analysis of various lysates using CD32A + CD32B + CD32C Rabbit mAb (A21073) at 1:1000 dilution.

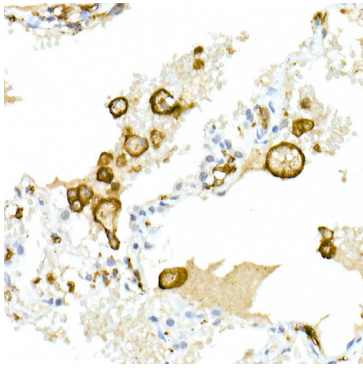
Secondary antibody: HRP Goat Anti-Rabbit IgG (H+L) (AS014) at 1:10000 dilution.

Lysates/proteins: 25µg per lane.

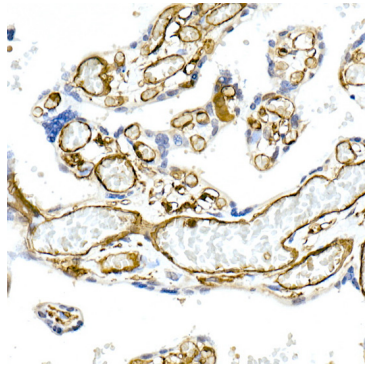
Blocking buffer: 3% nonfat dry milk in TBST.

Detection: ECL Basic Kit (RM00020).

Exposure time: 30s.



Immunohistochemistry analysis of paraffin-embedded human lung using CD32A + CD32B + CD32C Rabbit mAb (A21073) at dilution of 1:50(40x lens). Perform high pressure antigen retrieval with 10 mM citrate buffer pH 6.0 before commencing with IHC staining protocol.



Immunohistochemistry analysis of paraffin-embedded human placenta using CD32A + CD32B + CD32C Rabbit mAb (A21073) at dilution of 1:50(40x lens). Perform high pressure antigen retrieval with 10 mM citrate buffer pH 6.0 before commencing with IHC staining protocol.