

PPA1 Rabbit pAb

Catalog No.: A2108 **2 Publications**

Basic Information

Observed MW

35kDa

Calculated MW

33kDa

Category

Primary antibody

Applications

ELISA, WB

Cross-Reactivity

Human, Mouse, Rat

Background

The protein encoded by this gene is a member of the inorganic pyrophosphatase (PPase) family. PPases catalyze the hydrolysis of pyrophosphate to inorganic phosphate, which is important for the phosphate metabolism of cells. Studies of a similar protein in bovine suggested a cytoplasmic localization of this enzyme.

Recommended Dilutions

WB 1:500 - 1:2000

Immunogen Information

Gene ID

5464

Swiss Prot

Q15181

Immunogen

Recombinant fusion protein containing a sequence corresponding to amino acids 1-289 of human PPA1 (NP_066952.1).

Synonyms

PP; PP1; IOPPP; HEL-S-66p; SID6-8061; PPA1

Contact

 | 400-999-6126

 | cn.market@abclonal.com.cn

 | www.abclonal.com.cn

Product Information

Source

Rabbit

Isotype

IgG

Purification

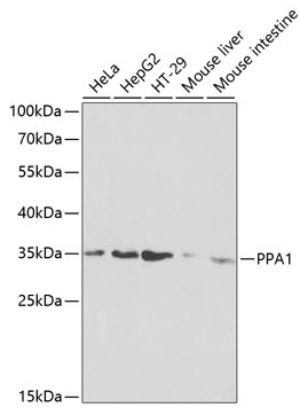
Affinity purification

Storage

Store at -20°C. Avoid freeze / thaw cycles.

Buffer: PBS with 0.02% sodium azide, 50% glycerol, pH 7.3.

Validation Data



Western blot analysis of extracts of various cell lines, using PPA1 antibody (A2108) at 1:1000 dilution.
Secondary antibody: HRP Goat Anti-Rabbit IgG (H+L) (AS014) at 1:10000 dilution.
Lysates/proteins: 25µg per lane.
Blocking buffer: 3% nonfat dry milk in TBST.