

CMTM3 Rabbit pAb

Catalog No.: A21087

Basic Information

Observed MW

Refer to figures

Calculated MW

20kDa

Category

Primary antibody

Applications

ELISA, IHC-P

Cross-Reactivity

Human

Background

This gene belongs to the chemokine-like factor gene superfamily, a novel family that is similar to the chemokine and the transmembrane 4 superfamilies of signaling molecules. This gene is one of several chemokine-like factor genes located in a cluster on chromosome 16. Alternatively spliced transcript variants containing different 5' UTRs, but encoding the same protein, have been identified.

Recommended Dilutions

IHC-P 1:50 - 1:200

Immunogen Information

Gene ID

123920

Swiss Prot

Q96MX0

Immunogen

A synthetic peptide corresponding to a sequence within amino acids 1-100 of human CMTM3 (NP_653202.1).

Synonyms

BNAS2; CKLFSF3; CMTM3

Contact

 | 400-999-6126

 | cn.market@abclonal.com.cn

 | www.abclonal.com.cn

Product Information

Source

Rabbit

Isotype

IgG

Purification

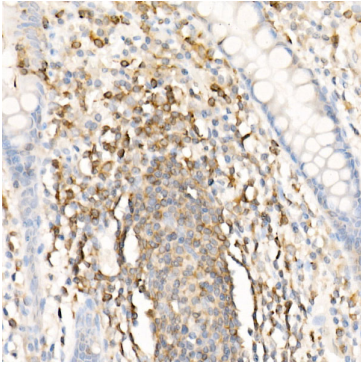
Affinity purification

Storage

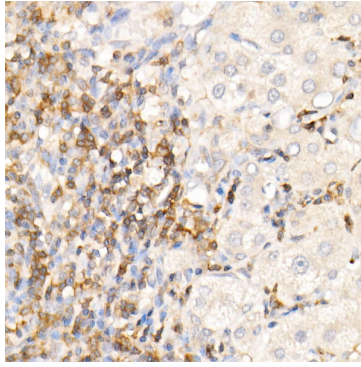
Store at -20°C. Avoid freeze / thaw cycles.

Buffer: PBS with 0.05% proclin300, 50% glycerol, pH7.3.

Validation Data



Immunohistochemistry analysis of paraffin-embedded human colon using CMTM3 Rabbit pAb (A21087) at dilution of 1:100 (40x lens). Perform high pressure antigen retrieval with 10 mM citrate buffer pH 6.0 before commencing with IHC staining protocol.



Immunohistochemistry analysis of paraffin-embedded human liver using CMTM3 Rabbit pAb (A21087) at dilution of 1:100 (40x lens). Perform high pressure antigen retrieval with 10 mM citrate buffer pH 6.0 before commencing with IHC staining protocol.