

# IL1RN Rabbit pAb

Catalog No.: A21089

## Basic Information

### Observed MW

18kDa

### Calculated MW

20kDa

### Category

Primary antibody

### Applications

ELISA, WB, IF/ICC

### Cross-Reactivity

Human, Mouse

## Background

Predicted to enable cytokine receptor binding activity. Acts upstream of or within insulin secretion and lipid metabolic process. Located in extracellular region and vesicle. Human ortholog(s) of this gene implicated in several diseases, including autoimmune disease (multiple); eye disease (multiple); kidney failure (multiple); lung disease (multiple); and vascular disease (multiple). Orthologous to human IL1RN (interleukin 1 receptor antagonist).

## Recommended Dilutions

WB	1:100 - 1:500
IF/ICC	1:50 - 1:200

## Immunogen Information

### Gene ID

16181

### Swiss Prot

P25085

### Immunogen

Recombinant fusion protein containing a sequence corresponding to amino acids 27-178 of mouse IL1RN (NP\_001034790.1).

### Synonyms

IL-1ra; F630041P17Rik; IL1RN

## Contact

☎ | 400-999-6126

✉ | [cn.market@abclonal.com.cn](mailto:cn.market@abclonal.com.cn)

🌐 | [www.abclonal.com.cn](http://www.abclonal.com.cn)

## Product Information

### Source

Rabbit

### Isotype

IgG

### Purification

Affinity purification

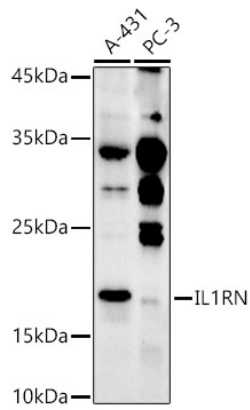
### Storage

Store at -20°C. Avoid freeze / thaw cycles.

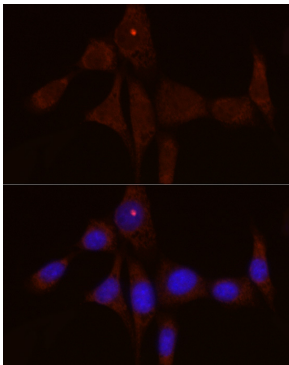
Buffer: PBS with 0.05% proclin300, 50% glycerol, pH7.3.

## Validation Data

---



Western blot analysis of extracts of various cell lines, using IL1RN antibody (A21089) at 1:500 dilution.  
Secondary antibody: HRP Goat Anti-Rabbit IgG (H+L) (AS014) at 1:10000 dilution.  
Lysates/proteins: 25µg per lane.  
Blocking buffer: 3% nonfat dry milk in TBST.  
Detection: ECL Enhanced Kit (RM00021).  
Exposure time: 180s.



Immunofluorescence analysis of NIH/3T3 cells using IL1RN Rabbit pAb (A21089) at dilution of 1:50 (40x lens). Blue: DAPI for nuclear staining.