

ELOVL6 Rabbit pAb

Catalog No.: A21094

Basic Information

Observed MW

31kDa

Calculated MW

31kDa

Category

Primary antibody

Applications

ELISA, WB

Cross-Reactivity

Human, Mouse, Rat

Background

Fatty acid elongases (EC 6.2.1.3), such as ELOVL6, use malonyl-CoA as a 2-carbon donor in the first and rate-limiting step of fatty acid elongation (Moon et al., 2001 [PubMed 11567032]).

Recommended Dilutions

WB 1:500 - 1:1000

Immunogen Information

Gene ID

79071

Swiss Prot

Q9H5J4

Immunogen

A synthetic peptide corresponding to a sequence within amino acids 50-150 of human ELOVL6 (NP_076995.1).

Synonyms

FAE; LCE; FACE; hELO2; ELOVL6

Contact

☎ | 400-999-6126

✉ | cn.market@abclonal.com.cn

🌐 | www.abclonal.com.cn

Product Information

Source

Rabbit

Isotype

IgG

Purification

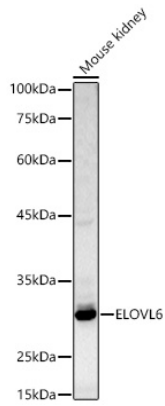
Affinity purification

Storage

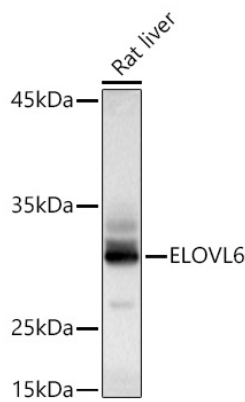
Store at -20°C. Avoid freeze / thaw cycles.

Buffer: PBS with 0.05% proclin300, 50% glycerol, pH7.3.

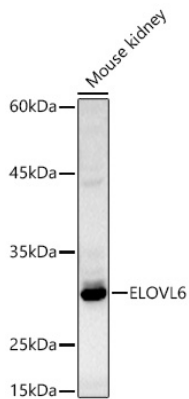
Validation Data



Western blot analysis of lysates from Mouse kidney using ELOVL6 Rabbit pAb(A21094) at 1:1000 dilution. Secondary antibody:HRP Goat Anti-Rabbit IgG (H+L)(AS014) at 1:10000 dilution. Lysates/proteins: 25 µg per lane. Blocking buffer: 3% nonfat dry milk in TBST. Detection:ECL Basic Kit (RM00020). Exposure time:30s.



Western blot analysis of lysates from Rat liver using ELOVL6 Rabbit pAb (A21094) at 1:1000 dilution incubated overnight at 4°C. Secondary antibody: HRP Goat Anti-Rabbit IgG (H+L)(AS014) at 1:10000 dilution. Lysates/proteins: 25 µg per lane. Blocking buffer: 3% nonfat dry milk in TBST. Detection: ECL Basic Kit (RM00020) Exposure time: 10 s.



Western blot analysis of lysates from Mouse kidney using ELOVL6 Rabbit pAb (A21094) at 1:1000 dilution incubated overnight at 4°C. Secondary antibody: HRP Goat Anti-Rabbit IgG (H+L)(AS014) at 1:10000 dilution. Lysates/proteins: 25 µg per lane. Blocking buffer: 3% nonfat dry milk in TBST. Detection: ECL Basic Kit (RM00020) Exposure time: 30 s.