

NG2/CSPG4 Rabbit mAb

Catalog No.: A21095 **Recombinant**

Basic Information

Observed MW

250-450kDa

Calculated MW

251kDa

Category

Primary antibody

Applications

ELISA, WB

Cross-Reactivity

Human

CloneNo number

ARC52162

Background

A human melanoma-associated chondroitin sulfate proteoglycan plays a role in stabilizing cell-substratum interactions during early events of melanoma cell spreading on endothelial basement membranes. CSPG4 represents an integral membrane chondroitin sulfate proteoglycan expressed by human malignant melanoma cells.

Recommended Dilutions

WB 1:500 - 1:1000

Immunogen Information

Gene ID

1464

Swiss Prot

Q6UVK1

Immunogen

Recombinant fusion protein containing a sequence corresponding to amino acids 1340-1563 of human NG2/CSPG4 (NP_001888.2).

Synonyms

NG2; MCSP; MCSPG; MSK16; CSPG4A; HMW-MAA; MEL-CSPG; NG2/CSPG4

Contact

☎ | 400-999-6126

✉ | cn.market@abclonal.com.cn

🌐 | www.abclonal.com.cn

Product Information

Source

Rabbit

Isotype

IgG

Purification

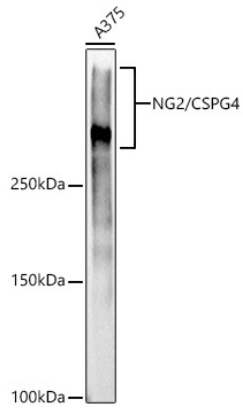
Affinity purification

Storage

Store at -20°C. Avoid freeze / thaw cycles.

Buffer: PBS with 0.05% proclin300, 0.05% BSA, 50% glycerol, pH7.3.

Validation Data



Western blot analysis of A375, using NG2/CSPG4 antibody (A21095) at 1:1000 dilution.
Secondary antibody: HRP Goat Anti-Rabbit IgG (H+L) (AS014) at 1:10000 dilution.
Lysates/proteins: 25µg per lane.
Blocking buffer: 3% nonfat dry milk in TBST.
Detection: ECL Basic Kit (RM00020).
Exposure time: 1s.