

MYO1B Rabbit mAb

Catalog No.: A21113 **Recombinant**

Basic Information

Observed MW

132kDa

Calculated MW

132kDa

Category

Primary antibody

Applications

ELISA, WB

Cross-Reactivity

Human, Mouse, Rat

CloneNo number

ARC2990

Background

Enables ATP binding activity; actin filament binding activity; and microfilament motor activity. Involved in actin filament organization and post-Golgi vesicle-mediated transport. Located in several cellular components, including actin filament; endosome; and perinuclear region of cytoplasm. Colocalizes with trans-Golgi network membrane.

Recommended Dilutions

WB 1:500 - 1:1000

Immunogen Information

Gene ID

4430

Swiss Prot

O43795

Immunogen

Recombinant fusion protein containing a sequence corresponding to amino acids 916-1136 of Human MYO1B (NP_001123630.1).

Synonyms

MM1a; myr1; MYH-1c; MMI-alpha; MYO1B

Contact

 | 400-999-6126

 | cn.market@abclonal.com.cn

 | www.abclonal.com.cn

Product Information

Source

Rabbit

Isotype

IgG

Purification

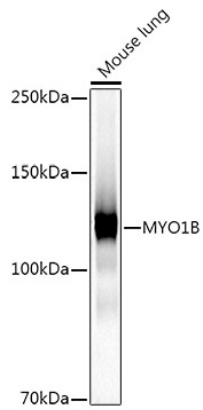
Affinity purification

Storage

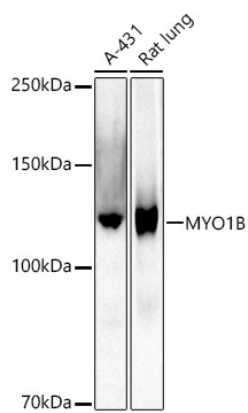
Store at -20°C. Avoid freeze / thaw cycles.

Buffer: PBS with 0.02% sodium azide, 0.05% BSA, 50% glycerol, pH7.3.

Validation Data



Western blot analysis of lysates from Mouse lung, using MYO1B Rabbit mAb (A21113) at 1:1000 dilution.
Secondary antibody: HRP Goat Anti-Rabbit IgG (H+L) (AS014) at 1:10000 dilution.
Lysates/proteins: 25µg per lane.
Blocking buffer: 3% nonfat dry milk in TBST.
Detection: ECL Basic Kit (RM00020).
Exposure time: 30s.



Western blot analysis of various lysates using MYO1B Rabbit mAb (A21113) at 1:1000 dilution.
Secondary antibody: HRP Goat Anti-Rabbit IgG (H+L) (AS014) at 1:10000 dilution.
Lysates/proteins: 25µg per lane.
Blocking buffer: 3% nonfat dry milk in TBST.
Detection: ECL Basic Kit (RM00020).
Exposure time: 180s.