

NDUFAB1 Rabbit mAb

Catalog No.: A21114 **Recombinant** **1 Publications**

Basic Information

Observed MW

10kDa

Calculated MW

17kDa

Category

Primary antibody

Applications

ELISA, WB, IHC-P

Cross-Reactivity

Human, Mouse, Rat

CloneNo number

ARC3068

Background

Predicted to enable acyl binding activity; acyl carrier activity; and fatty acid binding activity. Involved in mitochondrial respiratory chain complex I assembly and protein lipoylation. Located in mitochondrion and nucleoplasm. Part of mitochondrial respiratory chain complex I. Colocalizes with mitochondrial large ribosomal subunit.

Recommended Dilutions

WB	1:500 - 1:1000
IHC-P	1:50 - 1:200

Immunogen Information

Gene ID

4706

Swiss Prot

O14561

Immunogen

Recombinant fusion protein containing a sequence corresponding to amino acids 50-156 of human NDUFAB1 (NP_004994.1).

Synonyms

ACP; ACP1; SDAP; FASN2A; NDUFAB1

Contact

 | 400-999-6126

 | cn.market@abclonal.com.cn

 | www.abclonal.com.cn

Product Information

Source

Rabbit

Isotype

IgG

Purification

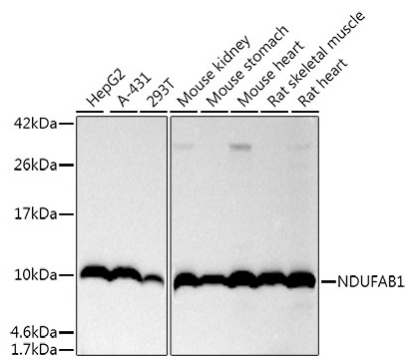
Affinity purification

Storage

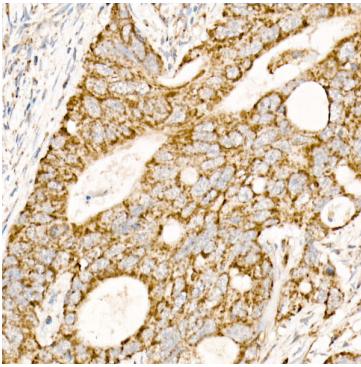
Store at -20°C. Avoid freeze / thaw cycles.

Buffer: PBS with 0.02% sodium azide, 0.05% BSA, 50% glycerol, pH7.3.

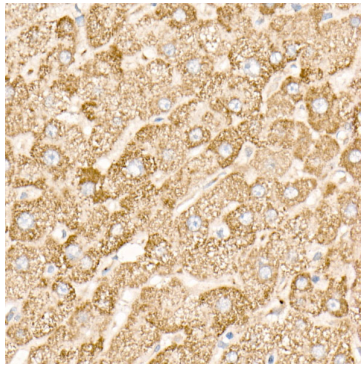
Validation Data



Western blot analysis of various lysates using NDUFAB1 Rabbit mAb (A21114) at 1:1000 dilution. Secondary antibody: HRP Goat Anti-Rabbit IgG (H+L) (AS014) at 1:10000 dilution. Lysates/proteins: 25µg per lane. Blocking buffer: 3% nonfat dry milk in TBST. Detection: ECL Basic Kit (RM00020). Exposure time: 60s.



Immunohistochemistry analysis of paraffin-embedded human colon carcinoma using NDUFAB1 Rabbit mAb (A21114) at dilution of 1:50 (40x lens). Perform high pressure antigen retrieval with 10 mM citrate buffer pH 6.0 before commencing with IHC staining protocol.



Immunohistochemistry analysis of paraffin-embedded human liver using NDUFAB1 Rabbit mAb (A21114) at dilution of 1:50 (40x lens). Perform high pressure antigen retrieval with 10 mM citrate buffer pH 6.0 before commencing with IHC staining protocol.