

# NDUFC2 Rabbit mAb

Catalog No.: A21116 **Recombinant**

## Basic Information

### Observed MW

14kDa

### Calculated MW

14kDa

### Category

Primary antibody

### Applications

ELISA, WB

### Cross-Reactivity

Human

### CloneNo number

ARC3020

## Background

Involved in mitochondrial respiratory chain complex I assembly. Located in mitochondrion. Part of mitochondrial respiratory chain complex I. Implicated in nuclear type mitochondrial complex I deficiency.

## Recommended Dilutions

WB 1:500-1:1000

## Immunogen Information

### Gene ID

4718

### Swiss Prot

O95298

### Immunogen

Recombinant fusion protein containing a sequence corresponding to amino acids 1-119 of human NDUFC2 (NP\_004540.1).

### Synonyms

HLC-1; B14.5b; MC1DN36; NADHDH2; CI-B14.5b; NDUFC2

## Contact

☎ | 400-999-6126

✉ | [cn.market@abclonal.com.cn](mailto:cn.market@abclonal.com.cn)

🌐 | [www.abclonal.com.cn](http://www.abclonal.com.cn)

## Product Information

### Source

Rabbit

### Isotype

IgG

### Purification

Affinity purification

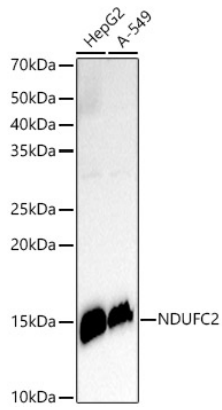
### Storage

Store at -20°C. Avoid freeze / thaw cycles.

Buffer: PBS with 0.02% sodium azide, 0.05% BSA, 50% glycerol, pH7.3.

## Validation Data

---



Western blot analysis of various lysates, using NDUFC2 Rabbit mAb (A21116) at 1:500 dilution.  
Secondary antibody: HRP Goat Anti-Rabbit IgG (H+L) (AS014) at 1:10000 dilution.  
Lysates/proteins: 25µg per lane.  
Blocking buffer: 3% nonfat dry milk in TBST.  
Detection: ECL Enhanced Kit (RM00021).  
Exposure time: 180s.