

# CSDE1 Rabbit mAb

Catalog No.: A21127 **Recombinant**

## Basic Information

### Observed MW

89kDa

### Calculated MW

89kDa

### Category

Primary antibody

### Applications

ELISA, WB

### Cross-Reactivity

Human, Mouse

### CloneNo number

ARC3050

## Background

Enables RNA stem-loop binding activity. Involved in IRES-dependent viral translational initiation; nuclear-transcribed mRNA catabolic process, no-go decay; and stress granule assembly. Located in Golgi apparatus; cytosol; and plasma membrane. Part of CRD-mediated mRNA stability complex.

## Recommended Dilutions

WB 1:500 - 1:1000

## Immunogen Information

### Gene ID

7812

### Swiss Prot

O75534

### Immunogen

Recombinant fusion protein containing a sequence corresponding to amino acids 1-100 of human CSDE1 (NP\_009089.4).

### Synonyms

UNR; D1S155E; CSDE1

## Contact

 | 400-999-6126

 | [cn.market@abclonal.com.cn](mailto:cn.market@abclonal.com.cn)

 | [www.abclonal.com.cn](http://www.abclonal.com.cn)

## Product Information

### Source

Rabbit

### Isotype

IgG

### Purification

Affinity purification

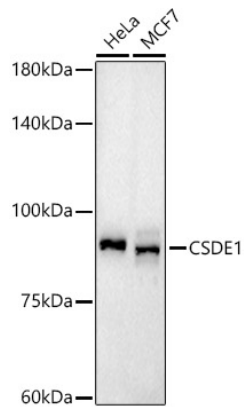
### Storage

Store at -20°C. Avoid freeze / thaw cycles.

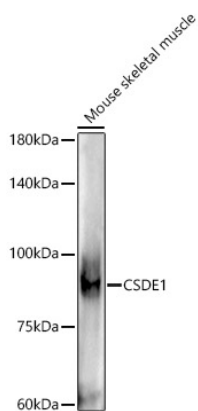
Buffer: PBS with 0.02% sodium azide, 0.05% BSA, 50% glycerol, pH7.3.

## Validation Data

---



Western blot analysis of various lysates using CSDE1 Rabbit mAb (A21127) at 1:1000 dilution.  
Secondary antibody: HRP Goat Anti-Rabbit IgG (H+L) (AS014) at 1:10000 dilution.  
Lysates/proteins: 25µg per lane.  
Blocking buffer: 3% nonfat dry milk in TBST.  
Detection: ECL Basic Kit (RM00020).  
Exposure time: 180s.



Western blot analysis of lysates from Mouse skeletal muscle, using CSDE1 Rabbit mAb (A21127) at 1:1000 dilution.  
Secondary antibody: HRP Goat Anti-Rabbit IgG (H+L) (AS014) at 1:10000 dilution.  
Lysates/proteins: 25µg per lane.  
Blocking buffer: 3% nonfat dry milk in TBST.  
Detection: ECL Enhanced Kit (RM00021).  
Exposure time: 180s.